

---

## Contents

---

<b>Title</b>	<b>Author</b>	<b>Page</b>
<b>Articles</b>		
<b>Moonwalk London 2019</b>	David Parr	7
<b>Playground Update</b>	Alex de Giorgio-Miller	3
<b>The Dyke's End</b>		18
<b>The Past and Future of the Cōa Valley</b>	David Thomas	5
<b>Bottisham and Burwell Photographic Club</b>	Daphne Hanson	13
<b>Bottisham Village College Adult Learning</b>		22
<b>Burwell and Reach Car Scheme</b>		24
<b>Burwell Museum</b>		14
<b>Burwell Museum Coach Trips</b>		6
<b>Bus Timetable</b>		34
<b>Cambridge Open Studios 2019</b>		15
<b>Cambridgeshire Fire and Rescue</b>		13
<b>Church</b>		
<b>Church Services and Events</b>		33
<b>Letter from the Vicarage</b>	Eleanor Williams	23
<b>Contact Information</b>		36
<b>Diary Dates</b>		35
<b>Crossword</b>		32
<b>Events Team</b>	Debbie Quilter	10
<b>Food Focus</b>	Catherine Gibson	23
<b>From the Editor</b>	David Parr	2
<b>IT Advice</b>	David McMillan	8
<b>Neighbourhood Plan</b>	Nick Acklam	4&20
<b>Out and About</b>	Joss Goodchild	16
<b>Paintings by Local Artists</b>	Joss Goodchild	21
<b>Parish Council</b>		
<b>Grant Fund</b>		26
<b>Know your District Councillors</b>		26
<b>Know Your Parish Council</b>		26
<b>Meeting Minutes</b>		27
<b>Rosanna's Ramblings</b>	Rosanna Moseley Gore	12
<b>Sport and Recreation</b>		
<b>Cricket Report</b>		22
<b>Reach Riders</b>		9
<b>Swaffham Prior School</b>	Helen Bartley	
<b>Tales from a Reach Garden</b>	Danuta Gibson	19
<b>Then and Now</b>	Chris Patterson	36
<b>Whats Growing on at Snakehall Farm</b>	Maz Baker	9
<b>Wicken Fen and Anglesey Abbey News</b>	Julia Hammond	18

---

## From the Editor

---

Two exciting events took place in May 2019.

Firstly, we had Reach Fair which seems to have gone down well with visitors, stallholders and villagers. The weather was ideal, not too hot, not too cold and above all dry.



You'll see a summary of the financials later on in this magazine, over £5K has now been transferred to the Grants Fund.



Later on in this issue you will see that the Events Team has decided that it will not be organising Reach Fair 2020 – and it is working with the Parish Council to identify new organisers and ensure a smooth handover.

Secondly, we have new owners at the Dyke's End at last. Matt and Mel, plus two dogs and two cats have moved in and by the time you read this, the restaurant will have re-opened and life can get back to normal in Reach!



We welcome them!

**David Parr**  
davidmparr@btinternet.com or 07887 563720

Cover Picture courtesy of **Philip Fuller**

---

## About the Magazine

---

The purpose of *Within Reach* is to serve the whole village by circulating information and interesting articles free to every household. Additional copies are available at a charge of £2.50. Issues are published bi-monthly covering the months of Feb/Mar, Apr/May, June/July, Aug/Sept, Oct/Nov and Dec/Jan.

Copies of the Minutes of Parish Council meetings and of *Out of Reach* and *Within Reach* magazines can be found on the village website [www.reach-village.co.uk](http://www.reach-village.co.uk).

The next copy date is 15<sup>th</sup> May 2019. This magazine is approved and printed by Reach Parish Council.

---

## Our Team

---

<b>Acting Editor</b>	David Parr
<b>Production</b>	David Parr
<b>Advertising/Treasurer</b>	David Parr
<b>Distribution</b>	Freda Lloyd, Claire Halpin-McDonald and Grahame Radford
<b>Photographer</b>	Rosanna Moseley Gore
<b>24Acres</b>	David Thomas
<b>Cookery</b>	Catherine Gibson
<b>Cricket</b>	Ross Clark
<b>Events Team</b>	Debbie Quilter
<b>Fen Chitchat</b>	Lesley Boyle
<b>Gardening</b>	Danuta Gibson
<b>IT Advice</b>	David Macmillan
<b>Parish Council</b>	Susan Bailey
<b>Reach Riders Group</b>	Sue Cameron
<b>Rosanna's Ramblings</b>	Rosanna Moseley Gore
<b>Snakehall Farm</b>	Maz Baker
<b>Swaffham Prior School</b>	Helen Bartley
<b>Then and Now</b>	Chris Patterson
<b>Wicken Fen</b>	Julie Hammond
<b>Wildlife</b>	Joss Goodchild



---

## Playground Update

---

Hurrah for sunny weather!

The playground and playing fields have been seeing plenty of visitors enjoying the fresh air and sunshine and my family are definitely grateful to have such great facilities on our doorstep.



One weekend when we visited, there were 4 families in the playground plus groups playing football, tennis and table tennis – a hive of activity!



Our 'Picnic, Play and Grow' project for the area of the old playground is now almost complete and looks fantastic! Thank you to the Garden Team at Prospects Trust for their work to get it ready in time for the fair. Thank you also to the National Lottery Community Fund and Tesco Bags of Help funding schemes for making the project possible. The table tennis table and picnic tables have already seen plenty of use, and the raised bed looks amazing and is planted with a mixture of native plants and herbs for the community to use.



The all important official opening event and table tennis tournament is scheduled on **Sunday 2<sup>nd</sup> June from midday till 2pm**. Everyone welcome! Soft drinks and cake will be provided – it's a party after all! Bring a picnic and enjoy the new area with friends and family. Tournament sign up on the day – trophy for the winner! We look forward to seeing you there.



## Bags of Help



---

## Please Vote for Us!

---

In Reach, our village green is at the heart of our community and a place for all walks of life to gather. Whether it's catching the bus to work or school, a turn on the swings with friends or one of the numerous organised village events, the green has seen all of village life. And now it's looking tired and in need of some care and repair. With input from residents, we have developed a plan of improvements to the benefit of all. We have been working with a fantastic local charity – the **Prospects Trust** provides real work experience and training to people with learning or physical disabilities. They have been involved in the designs and we look forward to working with their team again on this phase of our project, strengthening the links between this charity and our village.

We're delighted to announce that our application has been accepted to the **Calor Rural Community Fund** for £5,000 for this project. Work will include improving the bus shelters, the war memorial and phone box and installing new benches. Full details of our plans can be found at [www.calor.co.uk/communityfund](http://www.calor.co.uk/communityfund) (search for 'Reach' in projects).

Voting takes place between 2<sup>nd</sup> May and 17<sup>th</sup> June 2019. Register to vote on the Calor Community Fund website and then you will have 10 votes (you can vote for us 10 times!). We're a small village so we're going to need all the help we can get to compete with the larger villages who have applied – so please get family, friends and colleagues to vote for us too. If we get enough votes then we're through to the final judging panel and could receive the £5000 we need to restore the green to its former glory!

**Alex de Giorgio-Miller**  
Play Spaces Officer – Reach Parish Council,  
[a.degiorgiomiller@reachparishcouncil.org](mailto:a.degiorgiomiller@reachparishcouncil.org)

---

## Neighbourhood Plan

---

As part of its work to encourage our village to think about how it wants to evolve over the next couple of decades, the Reach Neighbourhood Plan Group will occasionally create opportunities for villagers to hear how other rural communities are developing new ways of living and working.



On Wednesday 8<sup>th</sup> May 2019 a meeting was held at the Reach Village Hall to learn more about the Swaffham Prior Community Heat Project and renewable energy and if there was enough interest from the residents to set up a Reach Community Energy Group.

Earlier in the year, Government announced new 'energy' policies with the view to reducing carbon emissions. These new policies include oil boilers being phased out within the next ten years and no new houses being built connected to the gas network.

Rural communities such as Reach who rely heavily on oil for their main energy will need to seek alternative solutions.

Swaffham Prior are quite a way ahead in exploring their alternative solution so we invited Sheryl French, Project Director, Mobilising Local Energy Investment from Cambridgeshire County Council (CCC) and Emma Fletcher, from the Swaffham Prior Heat Project and Community Land Trust to tell us more.

The talk covered the following points:

- An introduction to the Council's energy strategy and its objectives.
- Description of some of the work that the Energy Investment Unit and its Rural Estate are delivering – this included working with over 50 schools in the county and the Soham solar farm.
- Collaborations with Swaffham Prior on the Community Heat Project – a brief overview of the process to date and outlining how CCC have helped apply and obtain grants to undergo the feasibility studies.
- Q+A on the above and Reach's ambitions for its community.

We asked the residents of Reach to confirm if they would be interested in being part of a Project Group to confirm the feasibility of a community heating / energy scheme and then to go on to deliver it.

The meeting was very well attended by villagers showing a great deal of interest and enthusiasm both in developing a community energy project for Reach and being involved in its instigation.

Although we are only at the hypothetical stage of such a project, it would not be amiss to indicate the potential benefits: (i) The whole village could conceivably become energy self-sufficient quite easily. (ii) As producers AND consumers we would then not be at the behest of multi-national energy suppliers or subject to trends in the global energy markets. (iii) We would be helping reduce carbon emissions. (iv) We would have more control over our energy supply (v) Quite probably we would also have lower energy bills.

There is a strong likelihood that both local and central government will provide funding/grants for research, feasibility, planning and implementation of the project. This would potentially mean that as individual villagers we will not have to fund or invest in it.

The success of such a project will rely on a working group that is independent of the Neighbourhood Plan Project Group.

### Next Steps

The Reach Neighbourhood Plan will be creating a short energy survey which will be emailed to all those who attended the meeting. Anyone else in the village who was not present but wishes to take part, please get in touch.

Once the data has been collated, we will use this information to help guide us in our initial discussions with Cambridge County Council with the view to exploring the viability for a renewable energy scheme for Reach. If the initial findings look favourable, we will establish a Reach Energy Group.

If you were not able to attend the meeting but would be interested in either joining the group, or simply finding out more about it, please in the first instance email [jo@joriches.com](mailto:jo@joriches.com).

### Nick Acklam

Chair Reach Neighbourhood Plan Project Group  
[acklam@reach-village.co.uk](mailto:acklam@reach-village.co.uk)  
743749



---

## The Past and Future for the Côa Valley

---

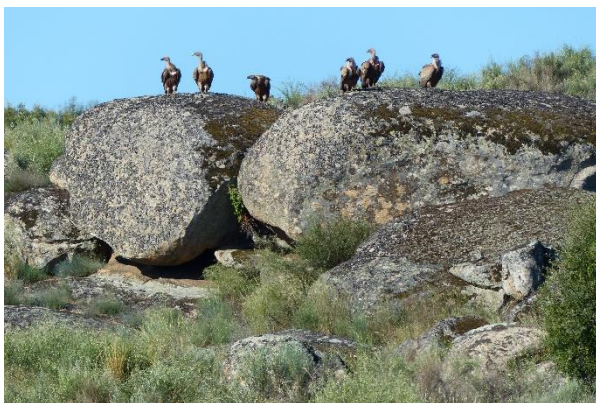
I've been lucky enough to spend my entire career doing a job that I love – conserving wildlife and its natural habitat, with a focus on the relationship between people, their livelihoods and wellbeing, and nature. It has taken me to amazing places around the world and introduced me to committed conservationists – volunteers and professionals – working to save threatened species.



My current job is as manager of the Endangered Landscapes Programme, an initiative that aims to reverse biodiversity loss across landscapes in Europe (you can find out more at: [www.endangeredlandscapes.org](http://www.endangeredlandscapes.org)). We are currently working in eight landscapes, from the Cairngorms of Scotland to the Carpathian Mountains in Romania.

Recently I visited the programme's project in the Côa Valley, Northern Portugal. In this area of 120,000 ha, where agriculture is being abandoned and many villages are now deserted, local organisations are working with Rewilding Europe to help restore the natural ecosystem. Iberian wolves are already returning and ultimately they hope to see the return of other 'keystone' species such as lynx and Ibex.

In this 'blog' I reflect on some of the abandoned buildings that I saw, and what they tell us about the area's past – and future.



With Griffon vultures soaring overhead, the warm air filled with the scent of rosemary, chamomile, lavender and wild thyme, and free-roaming horses drinking at a watering hole shaded by mature cork oak trees, the Faia Brava Reserve feels as natural and nature-filled as anywhere in Europe. But this part of the Côa Valley in Northern Portugal is just entering a new phase in its long social, economic and ecological history – and the signs of its recent past are all around us.

I'm visiting the Endangered Landscape Programme's project in the Côa Valley, Western Iberia. The project is being implemented locally by Rewilding Portugal. The project aims to restore a biodiversity-rich Mediterranean forest ecosystem, linked to a sustainable, nature-based economy.



The northern part of the valley lies within the Côa Valley Archaeological Park, a UNESCO World Heritage Site in which over a thousand engravings, dating back to the Upper Paleolithic (25,000 BP), have been etched onto the valley's rocks. The engravings provide a glimpse into the area's former ecology – the now extinct Aurochs features regularly, alongside wild horses and deer.



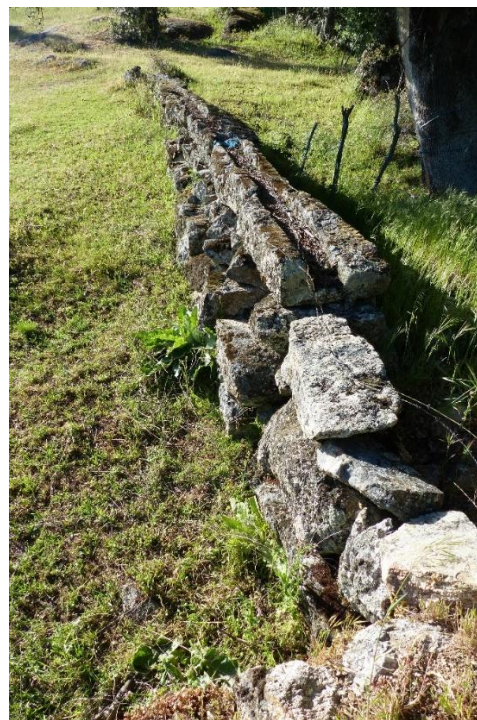
As I look out across the valley I can see signs of a more recent past - scattered among the trees many small, cylindrical towers, mostly painted white and topped by a roof of red tiles. These, I am told, are pigeon houses. "Go back 60-70 years and this valley was virtually treeless" explained Pedro Prata, Team Leader of Rewilding Portugal. "You can see this in aerial photographs from that time taken by the Royal Air Force. The forest had been cleared over many generations – for fuel, to clear land for agriculture and to produce charcoal for smelting of iron ore". As a result, agricultural productivity was on a downward spiral. Soils were being washed away and losing their fertility and productivity - times were hard. The pigeon houses were one response to that. "The pigeons provided an additional source of food for people in these remote communities and keeping them in pigeon houses also allowed people to collect their guano to be used as fertilizer".

But pigeon shit wasn't enough to restore the land's fertility and rescue the livelihoods of these communities, as the derelict farmhouses and ruined field barns alongside the pigeon houses testify. Starting in the 1980s there was a gradual migration from the countryside to the city, villages were abandoned, and nature started its comeback.



Further south we walked through a different kind of abandoned farmland along the banks of the Ribeira das Cabras, a tributary to the River Côa. Beside the river, at 100 metre intervals, are raised platforms built of large stone blocks, with a deep well at their centre. Pedro explained their purpose: "Donkeys were used to turn a wheel that would draw water up from the well, which was fed by the river, and deliver it into a stone canal that would take it to the top of the field. From there it would flow by gravity, irrigating the crops. The system is known as noras and has its origins in technology imported from North Africa". Now these constructions lie abandoned, their machinery rusting, as white-flowered broom takes over the fields. It must have been quite a sight, 70 years ago, to have seen these farms at work, the donkeys doing their circular trudge on their stone daises. But the fields are small – each no more than 0.5 hectares, and farmers couldn't compete with the productivity and low prices of industrialised agriculture. Now these fields are becoming open woodland and the wildlife is returning – this is a hotspot for recent sightings of Iberian wolf.

This abandoned architecture tells us a lot about the area's past. But the pigeon houses are as much a part of the landscape as the cork oaks, and they can also be part of the area's future. Sara Casado Aliacar, Conservation Officer at Rewilding Portugal, explained: "We are restoring pigeon houses in the gorge, in places frequented by Bonelli's eagle. The pigeons increase the food supply for the eagles and this is now a hotspot for birders who come and stay here to get a chance to see the Bonelli's eagle as well as other raptors like Griffon, Egyptian and Black vulture". So, the pigeon houses are being repurposed for the changed times – feeding pigeons instead of people but preserving the region's vernacular architecture and contributing to the revival of the local economy.



All the landscapes where the Endangered Landscapes Programme is working have been changed by human use that goes back generations. Features like pigeon houses and Noras are a potent reminder of that past, and in planning for the future it is vital to recognise that history, its importance in the making of communities and their culture, and its part in shaping the environment. But they can also be part of the future, a piece in a modern economy in which people come and pay to watch eagles soar above the Côa River.

David Thomas

---

## Burwell Museum Coach Trips

---



- **Clacton**  
Thurs 6th June - tickets £20
- **Cromer Pier Show**  
Wed 17th July - tickets £40
- **Southend**  
Tues 13th August - tickets £20
- **Sheringham 40s Day**  
15th Sept - tickets £19

Tickets on sale at Tina's North St Burwell or ring Barbara on 01638741581 or 07887712296.

---

## Moonwalk London 2019

---



The Moonwalk is a night-time charity event organised by UK based grant-making breast cancer charity, Walk the Walk. Women and men walk either a marathon (“Full Moon”) or half-marathon (“Half Moon”), wearing brightly decorated bras to raise money for breast cancer causes. The event is held annually in London – and this is the one that myself, my sister-in-law Sue and niece Emma did in early May.

We got to our hotel late afternoon – selected on the basis it was cheap (for London) and close by the start of the walk on Clapham Common. Then food was required, pasta it was, apparently it give you energy.

We got to the main tent at 10.00pm, as late as possible and its only then that you understand the magnitude of it all with thousands of people being entertained and motivated whilst they wait to set off.

Every participant was wearing a decorated bra, including the men (there were a few of us but overall we well outnumbered by the ladies). Mine came courtesy of a friend who had done the walk previously, I can't claim any credit for the decoration!



There were six starts, one every 15 minutes and it was just before midnight that we set off. The route is lovely, we walked by landmarks such as the Peace Pagoda, Big Ben, the Houses of Parliament, the London Eye, Tate Modern, Buckingham Palace and down the Mall.

Once the walkers had thinned out (initially you are amongst a large mass of people), we set off at a pace that ultimately we were unable to keep up! I think its nerves, none of us had walked the full 15 miles before, in my case the best I had done in training was 10 miles and one both occasions there was a restful pub lunch in the middle, as you would expect!



Once we got past halfway we felt better but the last three miles took us forever. There were volunteers all around the route though who gave encouragement to people and I am sure that made a big difference – but every muscle in my body ached.

When we finally got back to Clapham Common, the elapsed time was just over five hours – and it was daybreak. We headed back to the hotel and celebrated in the normal way.



Huge thanks go to everyone who sponsored me, you donated over £1,700 against an original target of £1,000 and the whole event has now raised in excess of £3M. And if anyone still wants to support this worthy cause, the page is still open at: <https://moonwalklondon2019.everydayhero.com/uk/david-5>.

It was a lovely experience – I can highly recommend it.

**David Parr**

---

## IT Advice

---

Now that large parts of the village have a fast, reliable internet connection with Fibre to the village and in some cases to the house, it seems an appropriate time to talk about catch-up TV and streaming services.



To start with let's look at how to connect your TV to a computer, tablet or phone so that you can watch TV programs and films services on your TV. If you have a Smart TV you may not need this guide, on the other hand you may not be able to connect to all the new services that have sprung up recently.

Firstly the simple way (incidentally this is my set-up): Most televisions have an HDMI (High Definition Media Interface) port which looks like this:



Many laptops and Mac's have a similar port. Buy an HDMI cable of a suitable length, there is no need to spend a lot, cheap cables work perfectly well in my experience. Amazon DIY stores and supermarkets sell them. If you have a wireless mouse you can control the computer remotely once the program is started, so a short cable will suffice, a long cable would enable you to have the computer by you.

Plug one end of the cable into the computer and one into the television, select the correct port with your TV remote, the button may be labelled 'input', 'source' or 'AV'. That may be enough and the computer will connect you automatically. If not, and you have a Windows computer, press the Windows Key and 'P' (for Projector) simultaneously and a screen pops up with choices. Select the one you want and you're away. If there is no sound at the TV right-click the loudspeaker logo, select sound settings then your TV from the list. On a Mac go to Apple Menu > System Preferences > Display and make your choices, if necessary, then select audio.

If your computer has a different connector adapters and cables with different ends are available. Macs are the most variable, there are third party connectors available if you don't want to pay Apple's high price, just make sure they carry audio as well as video.

If you have a tablet or phone adapters are normally available to connect to an HDMI cable. Once set up it is really easy to use.

If you want to be more sophisticated there are gadgets available to plug into your TV which connect to your broadband by wi-fi. They have connection to many popular services built in or can connect through your PC, phone, tablet or Mac. The most versatile is probably a Google Chromecast available direct from Google or some High Street stores from £30. Amazon have their Fire Stick which is more restricted and Apple have the more expensive Apple TV. Now TV have a stick for only £15 which will give you the iPlayer etc. plus allow you to view Sky with a pass.

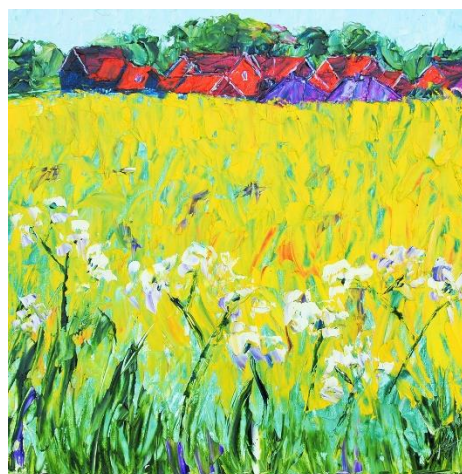
Now you are connected what services are available?

Firstly, the major TV companies have their catch-up services; the BBC has iPlayer, ITV the ITV Hub, Channel 4 has All 4 and Channel 5 has My 5, these are all free. Their main limitation is that Films are often not available because of licensing restrictions. If you are a Sky subscriber you can sign up for Sky Go so that you can view the services you subscribe to away from your main TV. If you are not a Sky customer, you can still watch on Now TV on a pay per view basis with no monthly contract. I use this service to watch Grand Prix races, I can watch a week of sport for £15 which covers practice and the race, or a day for £9. Reception is much improved since we got Fibre and you can hire or buy films.

Amazon offer video as part of the Prime service, many of their shows and some films are available free, others to rent or buy. Netflix is the best known service and is available for a monthly subscription which gives you access to everything available on the site. Rakuten TV offers films for rental and purchase without a monthly subscription.

As always with my monthly column I am always happy to talk you with any queries on 07975735710.

**David McMillan**  
741259



**Paul Abbott**



---

## Reach Riders

---



On the Saturday before Reach Fair Graham Buxton played live at the Village Centre. The Fair is an exciting weekend so to have a live music event was perfect.

Andy Cranch of Banquet Inns set up a bar and there were gin cocktails. The evening was full of music, good chat and laughter, and lots of dancing. The latter was much enjoyed. People had glammed up with their disco outfits, including leather trousers, and let go their inner rock chick. Toni and David Lucas were our chefs, and they provided a very tasty supper of chill con carne and a vegetarian curry which were excellent. Thank you for your very hard work.

A raffle was held in aid of the East Anglian Air Ambulance and £160 was raised. We are very grateful to those who donated prizes: -

- Back Treatment, Jed Robinson. Alternative & Holistic Health Service
- Bountiful Hamper. Manchetts, Burwell.
- Dog or Horse McTimoney Treatment. Siobham Gilligan (McTimoney Animal Chiropractor)
- Horsey Hamper. Alan's Ark, Soham
- Race Tickets. The Jockey Club. Newmarket Race Courses
- Tour of the Equine Hospital and Treatment Centre. Rosssdales Veterinary Surgeons
- Voucher. Elk Espresso Café, Burwell
- Wine and chocolates. Donated by villagers

We are grateful to the Parish Council who awarded £150 from the Reach Grant Fund.

The sum raised for Reach Riders Group was £390. It will be used to maintain and improve the riding arena which is located on the 24Acres. Last year the Group purchased some pole jumps and these augmented the existing cross-country jumps. Our future aims include the construction of a ditch which will be a very good practice feature as these jumps can be difficult – especially when the nerves of competition kick in. The facility of the arena is very good and do contact Sue Cameron if you are interested in joining.

Our musician for the evening was Graham Buxton and we thank him. It was a fun! Huge thanks go to Sadie King who came up with the idea for the evening.

**Sue Cameron**

---

## Snakehall Farm

---

Come and visit the Veg Shed and see what delights we have to offer. The co-workers and staff have been busy making more candles and testing out different types of holders. These would make a nice centre piece for a summer garden party, especially our Citronella scent that will keep the mozzies at bay. We also have some lovely tomato plants, peas, mangetout and rainbow chard which would be a lovely accompaniment to a salad. Now that summer is drawing closer we will be introducing a new line of preserves, such as Rhubarb and Ginger which is ready now for you to buy.



Tilly Tractor would like to know how you eat our produce? What is your favourite recipe using some of our lovely Snakehall Farm seasonal products? Send us your ideas at [enquiries@prospectstrust.org.uk](mailto:enquiries@prospectstrust.org.uk) or #TillyTractor on Insta, Facebook or Twitter. Development Manager Maz has shared her new affectionately named "Rhubarb Poo Pudding" its a different take on a sticky toffee pudding, take a look at our recipe posts for more details <https://prospectstrust.org.uk/tillys-tastes-recipe-card/>

### 30TH ANNIVERSARY OPEN DAY

Do you have passion for vintage cars and would like to share your passion by displaying some on our open day? Or are you more a creative person who likes baking or creating We will be holding a Cake competition for you avid bakers and a Scarecrow competition. If this sounds like you then get in contact. However if this isn't for you, we are also offering pitches for £5.00 on the day. For further information please contact [enquiries@prospectstrust.org.uk](mailto:enquiries@prospectstrust.org.uk)

### NEW RECYCLING SCHEME

We have signed up to Terracycle so we can recycle crisp packets, old toothbrushes and other items that cannot be put in with your everyday recycling. We have bins outside our shop, so please feel free to use and do your bit to help the environment. We would also like to say a big thank you to our corporate supporter Cosworth Electronics, who are standing with us in our fight to save the planet one packet of crisps at a time. <https://www.cosworth.com/electronics/>

**Maz Baker**

---

## Events Team

---

Looking back through our files, the Events Team really started its existence in 2011 (although maybe we weren't called that) when a group of us organised the Royal Wedding of William and Kate.



We really started calling ourselves the Events Team in 2014 when we organised the 24Acres Opening Event – when the team was Claire, Hannah, Jo, Karen and myself.

As a team we have always tried to keep our focus on village events that encourage the wonderful community spirit we have here in Reach. As a reminder the team's aims are:

- To organise village events
- To support villagers who have ideas for other events make them happen
- To keep a list of the village events on the website, with pictures of those concluded

And we have a number of events planned, or which we are helping with:

<b>Sat 28<sup>th</sup> Sept</b>	Macmillan Coffee Morning
<b>October</b>	Harvest Supper
<b>Thurs 31<sup>st</sup> Oct</b>	Halloween
<b>Sun 1<sup>st</sup> Dec</b>	Christmas tree lights switch on
<b>Wed 11<sup>th</sup> Dec</b>	Seniors Christmas lunch
<b>December</b>	Christingle service
<b>Tues 24<sup>th</sup> Dec</b>	Carols around the Christmas tree

In 2017 we took on the organising of by far the biggest of our projects and that was Reach Fair – so 2019 was our third and maybe our best.

### **But it will also be our last.**

The Events Team have taken the decision of not organising Reach Fair 2020 and the Parish Council have been informed of this and it will be on the agenda for the next Parish Council Meeting on Wed 5<sup>th</sup> June at 7.30pm.

We will happily assist in transferring our knowledge to whoever takes over and providing advice/guidance as requested - and individuals from the team will doubtless help on the day but the Events Team will not be organising the Fair itself any more.

**The Events Team will continue however** – doing what we do best and enjoy most which is the smaller village “specials” like the Christmas Events and the Seniors Christmas Lunch, which was delightful.

Further information will follow shortly so that a way forward can be found in good time for Reach Fair 2020.

### **David Parr**

On behalf of the Events Team

**Email:** [reacheventsteam@btinternet.com](mailto:reacheventsteam@btinternet.com)

<http://www.reach-village.co.uk/news.html>

Find us on Facebook too!

---

## Reach Fair 2019

---



The Fair went well.

The figures on the next page show that financially it was a good Fair - but the Fair should always be more about the overall enjoyment of visitors and villagers than the money generated.

The weather was optimal, the car park and traffic management worked a lot better than last year and people went away happy (our stallholders certainly did).

And we had dodgems!

### **David Parr**

On behalf of the Events Team



## PROVISIONAL ACCOUNTS 2019

Item	2019		2018		2017		2016	
	Income	Costs	Income	Costs	Income	Costs	Income	Costs
<b>Commercial Stalls</b>								
1 Bars	£950		£950		£850		£750	
2 Charity Stalls	£0		£0		£0		£97	
3 Craft Stalls	£1,560		£1,510		£1,530		£665	
4 Entertainments	£220		£220		£650		£875	
5 Fairground	£2,700		£2,568		£2,300		£2,000	
6 Food Stalls	£2,375		£2,715		£2,540		£1,560	
7 Reach Residents Stalls	£20		£20		£20		£0	
<b>TOTAL</b>	<b>£7,825</b>	<b>£0</b>	<b>£7,983</b>	<b>£0</b>	<b>£7,890</b>	<b>£0</b>	<b>£5,946</b>	<b>£0</b>
<b>Village Activities</b>								
8 BBQ	£3,123	£823	£1,971	£790	£2,842	£1,082	£2,727	£1,277
9 Bottle Stall	£675	£15	£299	£0	£459	£0	£355	£60
10 Car Park and Traffic Management	£3,334	£2,601	£3,356	£2,562	£4,608	£2,812	£2,964	£2,602
11 Coconut Shy	£136	£25	£98	£25	£181	£38	£189	
12 Football Game	£203	£25	£172	£25	£191	£38	£0	
13 Information/Charity Stalls	£0	£0	£0	£0	£0	£50	£0	
14 Other	£0	£0	£0	£0	£0	£0	£195	
15 Salad Stall	£872	£160	£1,213	£211	£719	£166	£589	£98
16 Smash the Crockery	£0	£0	£0	£0	£473	£0	£458	
17 Tea Tent	£885	£109	£708	£305	£1,426	£244	£1,392	£230
18 Village Games	£174	£74	£204	£69	£222	£117	£138	
<b>TOTAL</b>	<b>£9,402</b>	<b>£3,832</b>	<b>£8,021</b>	<b>£3,987</b>	<b>£11,121</b>	<b>£4,546</b>	<b>£9,008</b>	<b>£4,267</b>
<b>Other Costs</b>								
19 Advertising/Programmes		£367		£1,331		£658		£240
20 Cadets/Scouts		£550		£550				
21 Entertainments and PA System		£3,434		£3,168		£2,640		£2,300
22 First Aid		£305		£305		£329		£300
23 General Expenses		£1,260		£408		£524		£384
24 Police		£0		£0		£415		£416
25 Refuse Collection		£760		£552		£552		£0
26 Straw Bales		£240		£420		£385		£400
27 Toilets Hire		£660		£600		£660		£660
<b>TOTAL</b>		<b>£0</b>		<b>£7,334</b>		<b>£6,164</b>		<b>£4,699</b>
28 <b>INCOME</b>		<b>£17,227</b>		<b>£16,004</b>		<b>£19,011</b>		<b>£14,954</b>
29 <b>COSTS</b>		<b>£11,408</b>		<b>£11,321</b>		<b>£10,710</b>		<b>£8,967</b>
30 <b>PROFIT</b>		<b>£5,819</b>		<b>£4,683</b>		<b>£8,301</b>		<b>£5,987</b>
31 <b>To Grant Fund</b>		<b>£5,269</b>		<b>£5,233</b>		<b>£8,301</b>		<b>£5,987</b>
<b>Investments/Exceptional Items</b>								
32 A-Frame				£57				
33 Signs - Road and Road Closed				£517				
34 Feather Flag Signs				£350				
35 Tarpaulins				£88				
36 Tables		£556						
37		<b>£556</b>		<b>£1,012</b>				

### Notes

- Line 20 - costs included elsewhere in 2016 and 2017 and no payment made in 2018, corrected in 2019
- Line 31 - Profit less Cadets/Scouts 2018 retrospective payment
- Line 23 - includes £556 for tables purchased and annual insurance cost of £345

Huge thanks go to everyone who contributed during the preparations and on the day

---

## Rosanna's Ramblings

---

Yet another I got my 'gentle reminder' nudge email about writing this piece from David last week, and it felt like a remote call from a distant universe. You see, Charles and I were on our way from Edinburgh to Geneva, accompanying a group of 36 academics from Dixie State University in Utah on a study tour – and if you've ever



been responsible for a group of intelligent, motivated and enthusiastic adults as they move between lectures, eating places, coaches, planes, hotels, boats, castles, mountains and lakes, which of course you all will have been, you will know that this experience is akin to herding cats. So much expenditure of energy with so little chance of success (at least, within the time frame that had been carefully thought out and communicated).

This visit was responsible for our absence from Reach Fair this year – my fourth since arriving in the village, Charles's 56<sup>th</sup> by my reckoning. We were both in Cambridge that Bank Holiday Monday, each giving a lecture to the assembled Americans. So it was rather a strange experience – leaving the village at 7.30am as all the preparations were nearing completion, and returning by the back way into Great Lane at around 4pm by daringly disobeying the "Road Closed" signs and driving very slowly and carefully on the bumpy fen road in the face of hordes of families leaving the fair on their bicycles.

It felt like going back in time to a simpler, slower, more satisfying era where a whole community could get pleasure from one single shared experience - rather than the extraordinarily individualised lives we all seem to live now, each plugged in to our own music soundtrack, our own downloaded movie. Last year I went to an exhibition in London, and we were all given our own headset at the start – I explained that I never use the Audio Guides offered by museums and it was patiently explained to me that the whole exhibition was based around hearing particular music at particular points. So, the friend I went with and I each donned our headphones and experienced the exhibition in our own unique sound bubble. It only became a shared experience when we came to the end, handed back the audio equipment, and asked each other what we thought about what we'd seen and heard. It was rather weird, and rather sad, we thought. Even if the music was good.

So, back to the Fair. Watching the cheerful faces of the cycling children, and the rather more exhausted faces of their parents, there was a sense of having been Absent Without Leave. I'm sure many of you have, like me, told people you live in Reach – let's face it, a very small out-of-the-way sort of village with only an easily missed sign to it from the road from Cambridge as you turn for Swaffham Prior – to be met with "Oh Reach – we always go to the Fair!".

And having come to the village only recently, it does seem to be an amazingly organized and ambitious event which touches pretty much everyone who lives here. All credit to those who work so hard to make it happen. But this year – for the first time almost in living memory – Charles wasn't responsible for the book stall in the church – and it's strange not having been sorting books, pricing books, putting novels in alphabetical order by author, putting novels back in alphabetical order after punters had been outrageously rummaging through them and NOT PUTTING THEM BACK IN THE RIGHT PLACE. How much money did the books make this year? Did the same familiar faces turn up for a chat on their way to the cream teas at the other end of the church? How many small children convinced their parents to cough up another 50p for a small book they hadn't known they desperately wanted until they spotted it in the children's section?

So not being there was a bit odd – but it was also rather a relief as we would usually have darling dog Hector with us, curled up by my feet or fraternising patiently with canine and human admirers. But last year he was too poorly to have coped with all the hustle and bustle, and this year he isn't with us any more – and we're still very sad and missing him a great deal, so doing things differently was actually quite helpful.

It's been a very full-on fortnight, and three days ago as I write this, we were experiencing the highs and lows of being delighted by magnificent mountain scenery near Mont Blanc but simultaneously being shocked and distressed at the simply overwhelming scale of the disappearing glaciers.



As I say, very different mind universes, village life and undeniable catastrophic climate change. So undeniable and so shocking that one of our group, a staunch and traditional US Republican who would naturally be allied with a much more sceptical view point, described the trip as having changed her life. She flew back home today with a boulder, rather than a pebble, having landed in the pond of her awareness. Who knows where the tsunami-sized ripples will go?

We're back in Reach now, and back to the normality of our normally busy lives – but we have returned irrevocably changed, and deeply distressed, by what we saw. And who knows what the weather was like in the week we were away, but hardly any of our French beans have germinated, nor the parsnips, nor the carrots – the chard has bolted, and the few remaining leeks too (but that's a good thing, as I dry the beautiful flower heads). So as always, microcosms and macrocosms coexist, and feed into one another. And I know that change and uncertainty are inevitable – but sometimes it tires one out, doesn't it?

**Rosanna Moseley Gore**

---

## Bottisham and Burwell Photographic Club

---



So another season for the Burwell and Bottisham Camera Club has drawn to a close with our Annual End of Year Awards dinner. A warm congratulations to all those who came away with silverware. During the past season we have had speakers on all sorts of subjects from Iceland Through The Seasons by Liz and Barry Harper, Life in Antarctic Extremes by Professor Lloyd Peck to Drones with John Lord as well as club competitions and practical evenings.

This does not mean that cameras should be put away for the summer. The club has its summer outing to Oxford on the 9th June. This should be a great day of amazing photography, and there is still time to book, so please contact the club secretary for details if you would like to join us. A seat on the coach is £20 for a great day of photography. Our details can be found on the club's new look web site, which can be found at [www.bottburpc.org](http://www.bottburpc.org).

As well our outing to Oxford, summer always offers great opportunities for photography across Cambridgeshire and Suffolk, from the Fen's on our doorstep to the grand houses and coastline a short journey away. All you need to do is grab your camera and go.....

**Daphne Hanson**  
Hon Secretary

---

## Cambridgeshire Fire and Rescue Service

---



CAMBRIDGESHIRE  
FIRE & RESCUE SERVICE

[pressoffice@cambsfire.gov.uk](mailto:pressoffice@cambsfire.gov.uk)  
[www.cambsfire.gov.uk](http://www.cambsfire.gov.uk)

PREVENTING PROTECTING RESPONDING

### Summer fire safety

As the weather brightens up and the sunshine starts brightening our weeks we welcome the longer, brighter nights and the opportunity to enjoy summer days and nights in the garden.

When powering up your BBQ's and putting out the garden furniture for the summer season, be sure to take note of our top tips below to ensure you have a fun and safe summer in the garden.

- If cooking outdoors, always check BBQs over after winter storage. Keep them on level ground and ensure they are sited away from sheds, fences, overhanging foliage and property
- Keep children and garden games well away from the cooking area and never leave the barbecue unattended
- If you have a bonfire, build it well away from buildings, tents or other flammable objects and make sure it is properly out when you leave
- When out in the countryside, extinguish cigarettes properly and dispose of them responsibly – never throw a lit cigarette into a field or wooded area
- Don't forget to stay safe around our county's waterways and if you see someone in trouble in water, call 999 immediately with clear details of your location.
- When out camping or using a tent, never use candles inside or nearby and always discourage smoking nearby. Never cook inside a tent.

For the latest news, incidents and safety advice, or to contact us, log on to [www.cambsfire.gov.uk](http://www.cambsfire.gov.uk). Sign up to email alerts and find us on Twitter, Instagram, YouTube and Facebook.



---

## Burwell Museum

---



### Thank you for your support!

Thank you very much to the Co-op and everyone who came to our Easter Egg Hunt – we had just over 300 visitors to the museum in two days! It was really great to see so many people enjoying exploring the museum. If you enjoy the museum, we are still selling season tickets for 2019 which cost £15 for an individual, £20 joint and £25 for a family of up to two adults and four children – well worth it if you're planning several visits.

We also had a very successful National Mills Weekend on the 11<sup>th</sup> and 12<sup>th</sup> of May; many thanks to all involved, particularly Pat Kilbey and all of the wonderful musicians she finds for us!

### Classic Car Day 23 June

Our next big event will be the Classic Car day on the 23<sup>rd</sup> of June. If you would like to bring your car there may still be places, so please let us know on [education@burwellmuseum.org.uk](mailto:education@burwellmuseum.org.uk) to book a space. Or come along without a car and see vehicles of all vintages, including our very own Holsman and Austin 7. If you are interested in our vehicle collection, we are looking for volunteers to help take our own cars out to events, so please let us know if you could help with that.

### Volunteers needed

We're always looking for friendly, community-minded people of all ages to join our volunteer team. At the moment we particularly need:

Windmill volunteers (3 hours once a month or more on a Thursday or Sunday): We can't open the windmill unless someone is in it to make sure that our visitors are safe. This job just involves being in the bottom floor of the windmill, explaining some aspects of the mill (full training provided) and calling for someone to give a full tour if one is wanted. You're welcome to bring a book or device to while away the quieter parts of the shift.

IT volunteer (an hour or so a week on Tuesdays, possibly more for projects and emergencies): We need someone to organise and look after our computer systems and help to keep everything operating.

If you're interested, give us a ring on 01638 605544 or email [volunteers@burwellmuseum.org.uk](mailto:volunteers@burwellmuseum.org.uk).

### Festival week and Summer fete

We're looking forward to our Summer Fete on the 21<sup>st</sup> of July. We'll also be taking part in Burwell festival week with free entry to the vintage vehicles gallery from 6pm to 8pm on Thursday 13<sup>th</sup> June and a stall at the Carnival on the 15<sup>th</sup>.

### Holiday activities

It seems very early to start thinking about the summer holidays, but when they do arrive we will be offering visiting families the chance to find out "what history is made of" with a range of exciting things to do all over the museum. Activities are every Thursday afternoon from the 25<sup>th</sup> of July to the 29<sup>th</sup> of August, from 1.30-4.30pm, and are suitable for all ages.

**Web:** [www.burwellmuseum.org.uk](http://www.burwellmuseum.org.uk)  
**Email:** [museum@burwellmuseum.org.uk](mailto:museum@burwellmuseum.org.uk)  
**Tel:** 01638 605544  
Burwell Museum, Mill Close, Burwell CB25 0HL

---

## Arthur Rank Hospice

---

### Tandem Skydive - Sunday 9 June (or chose your own date): take your bravery to new heights!

Feel the adrenaline and do something that pushes you out of your comfort zone with this team jump day with UK Parachuting at Sibson Airfield, Peterborough! Register for £50 at [arhc.org.uk/jump.asp](http://arhc.org.uk/jump.asp)

### Histon and Impington Open Gardens – Sunday 9 June: for green fingered garden-lovers!

Around 15 gardens will be open to the public during the afternoon. Arthur Rank Hospice Charity is one of four chosen charities to benefit from this bi-annual event. Further information will be shared by organisers in due course – search for 'Histon and Impington Open Gardens' on Facebook, to 'Like' their page.

### Arthur Rank Hospice Summer Fete – Saturday 29 June: for all the family!

Our Summer Fete returns with all the traditional fun of the fayre in Arthur Rank Hospice's gardens. See [arhc.org.uk/summer-fete](http://arhc.org.uk/summer-fete) for further information in due course. Visit [arhc.org.uk/teaatthree](http://arhc.org.uk/teaatthree) or call 01223 675888.

### Alison Pinney

Fundraising Officer at Arthur Rank Hospice Charity  
01223 675888.

---

## Cambridge Open Studios

---

### Cambridge Open Studios Mini-Guide

Visit local artists this July when they open their studios free to the public. The codes indicating which weekends the artists will be exhibiting are as follows:

Weekend (1) 6/7 July      Weekend (2) 13/14 July  
Weekend (3) 20/21 July    Weekend (4) 27/28 July



Outside Edge

### Local Artists Exhibiting

#### 171 Outside Edge - *Six painters in various media*

Church of St Cyriac and St Julitta, High Street, Swaffham Prior, CB25 0LD

[heather.maunder@btinternet.com](mailto:heather.maunder@btinternet.com) 01353 698003

Joss Goodchild, Heather Maunder, Dafila Scott, Julia Suddaby, Vee Wallace and Hannah Webb show abstract, semi-abstract and figurative work.

**Weekends: 1, 2**

#### 172 Prior Arts Group - *Textiles, paintings, ceramics and print*

Swaffham Prior Village Hall, High Street, Swaffham Prior, CB25 0JX

[bramblecottagecrafts.co.uk](http://bramblecottagecrafts.co.uk)

[debs@bramblecottagecrafts.co.uk](mailto:debs@bramblecottagecrafts.co.uk) 07778 666187

The Prior Arts Group are holding their first popup gallery – painting, ceramics, textile and print art. Delicious refreshments available all day!

**Weekend: 2**

#### 173 Prior Arts Group - *Textiles, paintings, ceramics and print*

*Pop-up gallery*

3 Foster Lane, Rogers Road, Swaffham Prior, CB25 0FA

[www.instagram.com/priorartsgroup](http://www.instagram.com/priorartsgroup)

[celiatyler@hotmail.com](mailto:celiatyler@hotmail.com) 07804 508335

This is our second pop-up gallery in the village (each in a different venue) – painting, ceramics, textile and print art.

**Weekend: 3**

#### 174 Paul Abbott - *Colourful oil paintings and more*

The Mill House, 11 Mill Hill, Swaffham Prior, CB25 0JZ  
[www.vividicity.com](http://www.vividicity.com)

[paul@vividicity.com](mailto:paul@vividicity.com)

01638 741537

Colourful and uplifting oil paintings from a palette knife. Local landscapes – also coastal, rural and floral. Studio next to the windmill.

**Weekends: 1, 2, 3, 4**



David George

#### 175 David George - *Watercolour and oils*

Windmill Cottage, 34 Mill Hill, Swaffham Prior, CB25 0JZ  
[drgeorge459@gmail.com](mailto:drgeorge459@gmail.com)

Atmospheric and expressive watercolours and oils.

**Weekends: 1, 2, 3, 4**

#### 176 Ruth E Blundell - *Wooden sculptures and paintings*

34 Lower End, Swaffham Prior, Cambridge, CB25 0HT

[rutheblundell@hotmail.com](mailto:rutheblundell@hotmail.com) 07792 656223

Small - to medium-sized wooden sculptures and paintings – birds, water, boats, sea, land and creatures – painted in beautiful acrylic hues.

**Weekends: 1, 2, 4**

#### 177 Annie Neild - *Wet felting, hand embroidery*

36 Lower End, Swaffham Prior, CB25 0HT

[annie\\_neild@yahoo.co.uk](mailto:annie_neild@yahoo.co.uk) 07783 645573

Experimental wet felting with hand embroidery. I use sheep and alpaca fleeces, silk fibres, leather and fine Merino yarn in my work.

**Weekends: 1, 4**

#### 178 Di Cope - *Landscapes in oils, and more*

95 North Street (Studio above garage – please use stairs), Burwell, Cambridge, CB25 0BB

[dicope1.wixsite.com/di-home-page](http://dicope1.wixsite.com/di-home-page)

[di.cope1@btinternet.com](mailto:di.cope1@btinternet.com) 01638 601342

Visit an oil painter at work. Local landscapes. Browse, have a cold drink. Original work, prints, and greeting cards available to buy. Cards taken.

**Weekends: 1, 2, 3**

### Guide Book & App

Download from [camopenstudios.co.uk](http://camopenstudios.co.uk)

Pick up copy from libraries, local shops, galleries, park and ride sites and tourist information.

Download the App.

**Please see the guidebook for a full list of 370 artists taking part this July.**

---

## Out and About Spring/Summer

---

The hardworking blackbirds in our garden are looking ragged, they've raised two sets of demanding youngsters already. I'm aware that urban lighting in towns and cities causes blackbirds to breed earlier than those in the countryside but nevertheless these seem premature.



Both parents tirelessly feed their vocal short-tailed offspring. We bolster their diet with a daily handful of mealworms, they've become surprisingly trusting and tame. Nest building, also a team effort, involves weaving a bowl of twigs, mosses and leaves, sadly these structures can also contain fragments of plastic.



Blackbirds, a species of thrush, are seen singularly or in pairs but not in flocks. Male blackbirds establish a territory in their first year which they hold on to throughout their lives. Blackbirds sing beautifully, frequently from a high position, a tree or roof or power line, their song can also be triggered by rainfall.

They are the culprit who digs out soil and compost from flowerpots although this annoying pastime can perhaps be balanced by the fact that they are eating those garden pests, the slug and snail.

I read that the oldest tagged blackbird recovered was a remarkable 20 years old.



A woodmouse has lived in our garden for years, although undoubtedly this is not the same one as they rarely survive from one summer to the next. Nest chambers and a food storage area have been hollowed out of an upended tree stump. Despite being mostly nocturnal creatures, ours venture out occasionally when all is quiet.

Larger mammals on the village margins are also clearly visible, hare, roe and muntjac deer. Rabbits with gold-coloured coats can be spotted near Reach Wood. Ron tells me that rabbits with this unusual colouring, the result of a rogue gene, have been in Reach since the early 1970's. Rabbit virus has caused a sharp population decline (when did you last see a rabbit as roadkill?) and so, despite the fact they are a huge nuisance to the farmer and allotment keeper, we must keep an eye out for them.

We celebrated the return of 4 swallows to the stables on 12 April. They chatter noisily from the power lines, hawk for insects and currently labour over nest cleaning activities.

The cry of the male cuckoo can be heard almost daily in Reach, far harder to try and spot them. These solitary secretive birds never raise nor see their young, leaving the rearing duties to the diminutive reed warbler and dunnock, in this area. Cuckoos mainly eat insects and are particularly fond of hairy caterpillars.

As summer rolls in the Reach hedgerows bloom, a frothy mix of blackthorn blossom, crab apple, wild cherry and hawthorn. The verges brim with flourishing vegetation including flowering cow parsley, this an important habitat for beneficial insects (i.e. soldier beetles and hover flies). Later, its seeds attract seed-eating birds.

I was dismayed when the undoubtedly rich and abundant verges running along Weirs Drove were unceremoniously mown flat recently. The tractor and cutter then decimated those down both nearby rural droves. I feel concern for the casually and recklessly destroyed insects and their habitat, attention has been brought to the fact that insect numbers (they arrived before us about 479 million years ago) are in a steep and worrying decline, that farmers need pollinators for their crops and yet these field-bordering verges were ruined. I presume this is because motorists require better visibility, I question whether they should be driving if verge cow parsley affects motor-ability. If verges have to be mown, why not only 2ft in from the tarmac?

There are avocets again on Tubney Fen, distinctively patterned black and white birds of marshlands and shallow waters. These elegant waders stoop to feed on aquatic insects, worms and crustaceans from stilt-like legs, sweeping their long upturned bill from side to side in the water. Both parents make a nest in May, in bad weather the young shelter in their parents' feathered wings.



Moorhen and coot also inhabit the reed-fringed shallows of Tubney waters. Interestingly, coot collectively throw up water to ward off predators and, if further threatened, dive, they have been observed clinging to aquatic plants to hold themselves below the surface, leaving only the bill exposed, as far as the nostrils, for respiration. I read this amusing advice, on the unpalativeness of coot; when cooking, stew the bird for several hours in a pan with a brick then throw away the coot and serve the brick!



Ron tells me that Joe The Crow, the unusually coloured black and partly white resident of Reach (particularly The Green), is actually Josephine The Crow. This has become evident as she tries to dodge the amorous intentions of an interested male crow. Ron also noted the swifts returned to Reach this year about 5 days later than usual. The 6/7 pairs that usually nest under the eaves of their barn are currently reduced to 3/4.

Nick and Claire Acklam's key wildlife sightings:

- 20 March. Four Roe deer on the field next to the 24Acres.
- 21 March. Four Roe deer in the centre of Tubney Fen. This may be the group seen the previous day - there are several active crossing points on Reach Lode.
- 22 March. A post, newly installed by the National Trust to stop vehicle access on Old Bar Drove, has quickly become a feeding post for a raptor of some description. A toad skull and skin sit on the post top, the butchery very precise.
- 24 March. A pair of Buzzards circle upwards riding a thermal above the black fen soil at the top end of Straight Drove. A Little Egret flies close, its white plumage staggeringly bright and unsullied.
- 25 March. A pair of Egyptian geese fly along Reach Lode.
- 26 March. A Jackdaw family is now regularly taking material into the nest box on our chimney stack.
- 29 March. Clusters of Yellowhammers in the scrub by Little Fen Drove.
- 30 March. An enormous flock of Wood Pigeon - more than a hundred strong - on the field to the side of Straight Drove. I have no idea why. There is no obvious food source present.
- 4 April. A Roe buck with twin pronged antlers lies dead on the northern edge of Tubney Fen. There is no obvious cause of death but, as the scavengers have yet to get to work, I suspect it died overnight.
- 16 April. Very little of the deer corpse now remains beyond the skull and spine. Nature's recycling is really efficient!

21 April and 11 May. Short-eared owls hunting over the pasture between Straight Drove and Reach Lode. The latter sighting is very late for what has become a winter visitor hereabouts.

22 April. First Cuckoo or Cuckoos heard in the scrub by Delver bridge and then by the SW Fishing Pit which seems to be a favoured haunt.

24 April. Common Star of Bethlehem in flower on the verge of Barston Drove. There are good numbers of Brimstone and Orange tip butterflies here too. First swallow spotted. Yellow wagtail on Little Fen Drove.

30 April. A pair of Egyptian Geese on Tubney Fen. A possible sighting of a Nightingale, fleetingly as it flew into scrub on Barston Drove.

2 May. Female Mute Swan and six cygnets on the Catchwater Drain by the Hythe.

4 May. Pair of Oystercatchers by one of the ponds fringing Burwell Fen.

11 May. Sedge and reed warbler calling noisily in the reeds alongside Straight Drove.

13 May. Cuckoo sighted in the willow avenue close to Tubney. First swifts overhead at home at midday. They are late in arriving this year.

16 May. A Grass Snake, about 18 inches long, emerges from the dense vegetation of Reach Lode bank and rests briefly on the gravel track, its tongue flicking, before returning whence it came at great speed.

17 May. A fox, low slung and redder than many seen recently, runs towards us across Tubney Fen before registering our presence and turning tail.

**A rare and devastating disease quite literally knocked me off my feet in 2018. Undertaking a simple sketch or watercolour of our dachshund became my one attainable daily task. This book details the succour a small dog and art can bring to a chronic situation.**




photo [www.mark-harvey.com](http://www.mark-harvey.com)

Available at £20 - please email [jossmg@icloud.com](mailto:jossmg@icloud.com)

**Joss Goodchild**  
[jossmg@icloud.com](mailto:jossmg@icloud.com)

---

## Wicken Fen and Anglesey Abbey

---



Flag Iris taken by Glynis Pierson

Our Nature Trail open on 1<sup>st</sup> June, when the fen will be full of lush green foliage and fen flowers. It's a lovely summer walk of 2 ¼ miles around the ancient Sedge Fen, where you'll also have the chance to see butterflies and dragonflies on the wing. Look out for marsh orchids, ragged robin, yellow loosestrife and marsh thistle amongst the foliage.

We're still enjoying hearing the male and female cuckoos on the reserve. The male gives the distinctive 'cu-ckoo' call that we all know and love, but you may not have heard the females bubbling call. Listen out next time you are out walking at Wicken Fen. It's great to be able to hear and see these birds when their numbers are declining, and your support helps us maintain their habitats.

Our programme of adult events continues with **An evening with Tony Juniper** on Friday 14 June 19:30-21:30. Join us for a lively look at the future of conservation in the UK, and how the Wicken Fen Vision is contributing to the way forward, with the newly appointed Natural England chair. The second of our series of writing workshops **People in the Landscape: the Fens** takes place on Saturday 15 June 10:00-14:00. Writer-in-residence Guinevere Glasfurd leads a half day workshop investigating the stories of our local history. We also see local basketmaker Nadine Anderson return for her popular **Rush Weaving Workshop** on Saturday 29 June 10:00-16:00, and local printmaker Judith Handley return for her second **Introduction to Lino Printing Workshop** on Saturday 20 July 10:00-16:00.

Don't forget that we'll have lots of fun family activities over the summer holidays, starting on 29 July, check out the 'What's On' section of our website for all the details.

Advance booking is essential for all events at Wicken Fen.

Full details and ticketing information can be found on our website: [www.nationaltrust.org.uk/wicken-fen](http://www.nationaltrust.org.uk/wicken-fen).

---

## The Dyke's End

---



Matt and Mel Longfoot are now running the Dyke's End! I won't bore you with the logistical details regarding freehold, leasehold and sub-lease, suffice it to say it's these guys that matter to us going forward.

Matt originates from Peterborough and Mel from Nottingham and they first met on January 11<sup>th</sup> 2015 and subsequently got married on the 24<sup>th</sup> September 2017. They bring with them a black pug called Basil and a chestnut Chug (chihuahua pug mix) called Elvis - so it looks like the Dyke's End's pub-friendly stance is safe! And two cats, so its going to be cat friendly as well now.

They come to us from the Kings Arms at Polebrook where Matt was the Head Chef and Mel was the Restaurant Manager, so we are clearly in good hands.

I asked Matt what he would be cooking for us and he said "my rule is that you cook for your customers – not your ego" so we have someone that wants to satisfy his customer base, not his own whims. He has access to all Gordon's menus so he knows what the Dyke's End customers are used to – and in addition, there will always be "specials" which customers will only get to know about upon arrival. He summarised it as being "Classic Pub Grub, cooked fresh daily, using local ingredients" – which sounds perfect.

So as I write this in late May, the couple are getting things in place for the re-opening of the kitchen on Friday 31<sup>st</sup> May. The menu is printed as is the new wine.

And a new website, which Mel is working on, with the new domain name of: [www.dykesendreach.co.uk](http://www.dykesendreach.co.uk).

Matt and Mel look forward to welcoming villagers to the Dyke's End so please come along, say hello and check out the food which is on offer.

**David Parr**

---

## Tales from a Reach Garden

---

I am writing this on a warm and sunny afternoon in March. Spring has started and it feels like summer, although this summery weather is unlikely to last. The last couple of months have been mild and very windy at times. Local woodland birds have been busy at the feeders in the garden - when the wind drops - and are looking for suitable nesting sites in the hedges.



The snowdrops have flowered and gone to seed. The daffodils have been flowering for a few weeks, but many have faded now and need dead-heading. The hyacinths are in full bloom and their gorgeous scent fills the air. The hellebores have been in flower since January and are looking lovely even now. The long, fat leaves of tulips have emerged from the ground with their flowers which are still green and closed up, but ready to dazzle with their brilliant colour within a couple of weeks.



**Hyacinths in mid March**

Clumps of dead nettles are flowering too and weeds of many sorts are emerging and flowering everywhere in the garden. March is usually busy with seeds to be sown and planting to be done but seems especially so this year, thanks to the extra weeding.

Also emerging since the end of February are spears of broccoli which were probably brought on by the warm weather we had back then. The broccoli plants look strong and healthy and less bedraggled than usual in spite of the strong winds we had recently.

Now that the spears are ready for picking, I'll be cutting the succulent, purple clusters with their tender leaves regularly to encourage more spears to be produced and to prevent the yellow flowers from forming. This will probably continue through to the end of May when the stems will be much thinner and the clusters much smaller; by then the plant will be so desperate to flower, the yellow-petalled flowers will develop almost immediately and go to seed very quickly too.

However, the mild weather has protected adult cabbage whitefly over winter and they have made their presence felt. Every broccoli spear that was harvested yesterday afternoon was accompanied by a small cloud of whitefly. Whitefly are not easy to control outdoors and will be laying eggs on the underside of cabbage, kale and broccoli leaves fairly soon. The baby whitefly (technically speaking, they are nymphs) will suck the sap of leaves as they grow and secrete a sticky honeydew which attracts fungal moulds that can damage leaves and weaken plants. It's best to remove badly damaged leaves as soon as they are spotted to help prevent any infestation from spreading.

I've learnt recently that a car vacuum cleaner, (or a small vacuum cleaner with a fine nozzle) is quite useful for removing adult whitefly, so I'll probably invest in one of those soon. The vacuumed whitefly should be sealed in a bag and placed in a freezer for a couple of days, to ensure they are dead before being binned. In any case, to help prevent more cycles of whitefly emerging later in the year the leaves of cabbages, kale, broccoli etc., should either be buried in a trench covered with a thick layer of soil (where they will compost slowly once the cropping has finished), or burnt; or fed to chickens who'll be glad of the extra protein.



**Broccoli spears growing in the spring sunshine**

I do enjoy this time of year in spite of all the work that's involved in the garden. It's the sense of potential when sowing seeds and watching seedlings emerge and flourish, eventually providing food for the table later in the year. Nevertheless, as the whitefly has shown, you need to be vigilant and act on the pests quickly, or learn to live with them.

**Danuta Gibson**



You are invited to

## Learn about Reach past and present and how you can help shape its future – come to the launch BBQ Event

Sunday 16<sup>th</sup> June 2019, 12pm till 4pm

At Reach Village Hall - Everyone welcome!

What's On:

- Craft activities and mini treasure trail for accompanied children
  - Make a Father's Day gift for your special Dad!
- Giant interactive map of Reach – plot your favourite spots, give feedback & ideas on what you'd like to preserve or change
  - Reach now & then photo display
- Learn more about the areas covered in the Neighbourhood Plan
  - BBQ, beer and soft drinks!

Come & learn more about the magical Kingdom of Reach and have your say!

**PLUS** Monday 17<sup>th</sup> June - Meet at Ditchfield Bus Stop @6.30pm

**Guided Walking Tour by Charles Moseley & Steve Boreham** – This circular walk will take in the viewpoint at the top of Church Hill, the wood and the old quarries, the Drying Green and the Hythe, and will end on Fair Green. We shall think about Iron Age and Roman use of the land and drainage of the Fen. As part of our Neighbourhood Plan, we'll be looking at the importance of 'views' across the fen and village.  
**Terrain:** footpaths and byways, mostly grass, some of which might be wet.

---

## Paintings by Local Artists 2019

---

Once again 3 artists from Reach - Hannah Webb, Dafila Scott and Joss Goodchild, together with East Anglian painters, Vee Wallace, Heather Maunders and Julia Suddaby exhibit their works as the art group Outside Edge.

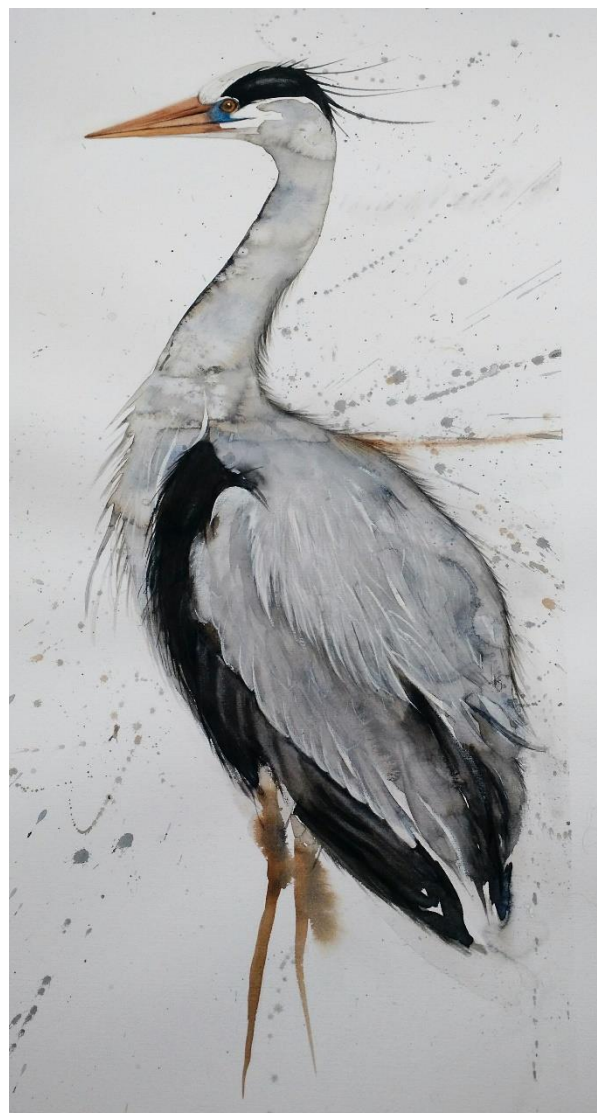
This event takes place in the beautiful and atmospheric St Cyriac Church at Swaffham Prior on Saturdays 6 & 13 July and Sundays 7 & 14 July from 11am to 6pm. A range of paintings will be shown - landscape to still life studies, portraits to wildlife. Cards, postcards and books will also be available.



**Fen by Joss Goodchild**



**Marbled White Butterfly - Reach Wood**



**Heron by Heather Maunders**



**Fence by Vee Wallace**

**Admission is free and all are very welcome**

---

## Cricket Report

---

Sunday 28 April

**Teluga Association of Cambridge (228 for 7) beat Reach (86 all out) by 142 runs**

Last April Reach set a new record for the coldest game of cricket ever played in Britain – or thereabouts. Thanks to rapid global warming, this season began in a balmy 14 Celsius rather than eight, but once again with a northerly wind to blow the bails off at regular intervals. If only the umpires had failed to notice, we would have had the opposition out within half a dozen overs.



**A thoughtful strategy meeting. Captain Phil Kingsmill wears the smart new Reach Cricket Club light blue cap**

Actually, we started well. Under our system of revolving captaincy the baton was passed to Phil Kingsmill – a well-deserved honour given that last year he was the man they couldn't hang. He was only dismissed once all season, consequently ending top of the averages. Phil proved less adept with a coin than a bat, losing the toss but he made up for it when, in the 25th over, we had TAC 125 for 7. It suddenly began to dawn on us that we might feasibly win a match. With four wickets in a tidy 7 over spell, Rob Steed ended just one wicket short of having to buy the team a jug of beer. But then it seemed to slip a bit. For TAC, Naresh and Rupesh built a partnership of 73. At the end of their 40 over innings, TAC were 228.

Little had we known that even at 125-7, TAC already had more than enough runs on the board. Apart from 31 from 31 from Reach man of the match Chris Bridgeman, no-one else managed to get established. We suffered our familiar mid-order collapse and were all out for 86 in the 16th over. While we headed off down the pub, for Phil to resign the captaincy before a tense press conference, TAC stayed on in the twilight, frustrated that we hadn't put up enough resistance to give them sufficient bowling practice.

Sunday 12 May

**Cambridge Kerala (299 for 5) beat Reach (93 all out) by 206 runs**

Over the past five seasons, the 24Acre field has developed into something of a fortress for Reach Cricket Club. Try as our opponents might, none of them can quite seem to make 300 runs against us. Twice, Grantchester fell on 299. Could Cambridge Kerala go one run better and hit the triple ton? Like hell, could they. Once again, facing a tight Reach bowling attack in the last couple of overs in Tim Davies and new boy Hugo Bennett, they just couldn't quite get over the line, and ran out of overs on 299.

A moral victory, then. But the thing about moral victories is that they are not to be compared with the real thing. The total never seemed to get any closer as we prodded and swiped our way to a modest 93 all out. A special mention to our man of the match, on his debut, Roger Mills, who bowled tidily and proved so instrumental in preventing Kerala setting a record total for the 24Acre field.

**Ross Clark**

### **Bottisham Village College New evening courses**

**Cookery: A Taste of Italian  
Spring on the Table  
Design your Own Garden  
Digital Photography**

**Floristry: Cut Flowers for Summer  
Introduction to Counselling  
Prepare for Maths GCSE (Free)\*  
\*(for those intending to enrol on our  
Maths GCSE for Adults in September)**

**Vibrant Inks and Pen Drawings for  
Landscapes  
Yoga Workshop**

**Our full range of courses is  
available on our website:  
[www.bottishamvc.org/adultlearning](http://www.bottishamvc.org/adultlearning)**

**Tel: 01223 811372 or Email:  
[adultlearning@bottishamvc.org](mailto:adultlearning@bottishamvc.org)**

---

## Food Focus

---



### Roast shoulder of lamb with merguez spices – from Hugh Fearnley-Whittingstalls River Cottage Everyday

I had this for dinner last night at Thomasina's – absolutely delicious and definitely one I will try myself. Probably not something to try with Spring Lamb – it will work better with older more mature lamb. It takes hours to cook at a low temperature after an initial blast, but really is worth it. What's more the preparation time says 15 minutes. I'd probably double that unless you are very organised and don't need to spend most of the preparation time rooting through your spices to find the right ones. Serves 6.



Lamb shoulder is an underrated cut. Treated to a very long, slow cook with pungent spices, it offers meltingly soft, flavourful meat that you can pull off the bone easily - as well as a pool of rich juices.

### Ingredients

1 shoulder of mature lamb, mutton or hogget, on the bone

For the spice paste:

- 1 tsp cumin seeds
- 1 tsp coriander seeds
- 1 tsp fennel seeds
- ½ cinnamon stick, broken up
- 1 tsp black peppercorns
- A pinch of cayenne pepper or chilli powder
- 2 tsp sweet smoked paprika
- 2 garlic cloves, finely chopped
- Leaves from 2 large rosemary sprigs, finely chopped
- 2 tsp sea salt
- 2 tsp olive oil

### Method

Toast the cumin, coriander, fennel seeds, cinnamon and peppercorns in a dry frying pan over a medium heat for a minute or so, until fragrant (this boosts the flavour but isn't essential). Crush to a coarse powder using a pestle and mortar, then combine with the cayenne or chilli powder, paprika, garlic, rosemary, salt and olive oil.

Lightly score the skin of the meat with a sharp knife, making shallow slashes just a few millimetres deep and 1-2cm apart. Rub half the spice paste all over the lamb shoulder, underneath as well as on top and especially into the cuts. Put into a large roasting tin and place in an oven preheated to 220°C/Gas Mark 7 for 30 minutes.

Remove from the oven and rub the remaining spice paste over the meat using the back of a wooden spoon. Pour a glass of water into the tin (not over the meat), cover with foil and return to the oven. Reduce the heat to 120°C/Gas Mark ½ and cook for 6 hours, or until the meat is very tender and falling off the bone. You can add another glass of water halfway through, to keep the pan juices ticking along.

Transfer the lamb to a warm serving plate. Skim the excess fat off the juices in the tin. Tear the meat into thick shreds and serve with the juices spooned over. Simple accompaniments are all you need: boiled new potatoes (in summer) or some roasted squash (in winter) and a dish of shredded cabbage, greens or kale would be ideal.



Catherine Gibson

## PS Farmers Markets happening near you in the next couple of months

Ely – 2<sup>nd</sup> & 4<sup>th</sup> Saturday of each month (June 8<sup>th</sup> and 22<sup>nd</sup>, July 13<sup>th</sup> & 27<sup>nd</sup>)

Burwell – 2<sup>nd</sup> Saturday of each month (June 8<sup>th</sup>, July 13<sup>th</sup>)  
Foodies Festival Cambridge – June 28<sup>th</sup> – 30<sup>th</sup> – Parkers Piece. A family event with street food to tea drinking in vintage tents. A great chance to learn more about food through demonstrations, industry experts, local and celebrity chefs.

---

## Letter from the Vicarage

---

There is nothing quite like knowing that you belong somewhere. We are made to be in community and whether we are outgoing or shy, we all flourish more when we have a network of people around us, a place where we feel we belong. We talk a lot about having a great community spirit here in Burwell, which is shown in so many ways, like the litter collecting, and the responses to appeals for help.



But no community is perfect and one of the most troubling aspects of the Brexit debates is how it has revealed an increasing polarisation of views across the country. About the only Brexit certainty is that in the end some of us will be delighted and some disappointed and that the feelings will be strong and deep. But somehow we will have to find a way forward, together. Somehow we will need to build a future that will help us all to flourish.

How do we do that? For me, inspiration comes from the words of Jesus, who taught us to love our enemies. I don't think his words mean that we all need to become best friends who always agree on everything. Rather, I think he means that we are to learn to listen to each other - really listen, in order to understand, not just waiting to jump in with a counter-argument; to respect each other, to live with our differences, and allow them to bring depth and colour and richness to our relationships. It is enjoyable to be with people who think like we do. It's far more challenging to be with those who don't. But the reward is a life, a community, a country, that is stronger and more vibrant because of the breadth and depth of thought and experience we discover together. Loving your enemies isn't easy, but I believe that Jesus was on to something when he taught these words. So I'm going to keep pondering on it, and keep trying to live it out - I wonder if you'll join me?

Thinking about other aspects of community: this year is the 25<sup>th</sup> annual Carers Week, from 10<sup>th</sup> - 16<sup>th</sup> June, and the theme is 'Getting Carers Connected – helping them get the practical, financial and emotional support they need to care for a loved one.'

You can find out more about the local Carers group from Burwell surgery, and we are hosting a Thanksgiving Service for Carers on Sunday 16<sup>th</sup> June at 3pm at St Mary's, followed by tea and all are welcome.

Special events in Reach: there will be another Candlelit Night Prayer at 7pm on Wednesday 19<sup>th</sup> June and then on Sunday 23<sup>rd</sup> June, St Etheldreda's day, our main 10am service will be in Reach, to which all are welcome. Following the service we will be serving refreshments in the Village Hall from about 11.15am, when there will be an opportunity for an update on the plans for the development of the church and grounds.

Other special events at St Mary's: Twilight Meditations - A Pilgrimage Walk around St Mary's is on Wednesday 5<sup>th</sup> June from 8pm, and the annual St Mary's Church Fete is on Saturday 8<sup>th</sup> June from 2pm - with all the usual attractions – stalls, tombolas, games for young and old alike, cream teas, ice creams and a BBQ. Inside the church, there will be an Art and Crafts exhibition. Admission is free so it's a fun afternoon for all the family. Proceeds will be divided between the church and other charities. Later in June Ely Consort are returning to St Mary's for a concert on 29<sup>th</sup> June at 7.30pm. performing John Rutter's 'Feel the Spirit.'

On Sunday 30<sup>th</sup> June at 10am at St Mary's is a very special service which will be the first time that Revd Paula will be presiding at Holy Communion, after her ordination as priest the day before. Everyone is welcome to come to the service, and to a bring and share lunch afterwards.

For more details of these and other events and services, see notices on the church door, our website and Facebook pages. Both our churches, St Mary's in Burwell and St Etheldreda's in Reach, are open all day, every day, for anyone to pop in, to look around, light a candle, say a prayer. Please get in touch if you would like more information about any of our events or services, including weddings, christenings and baby thanksgivings, or if you would like would value an opportunity to chat.

**Revd Dr Eleanor Williams**  
Vicar of Burwell with Reach,  
01638 741262  
vicar@stmarysburwell.org.uk

## Burwell & Reach Car Scheme

If you are unable to use conventional transport, the scheme can help you to travel from Reach or Burwell to:

*Chiropodists, Dentists, Doctors, Opticians, Shops, Visit Friends . . .*

Transport cannot be provided for Hospital Outpatient Appointments

Contact hours are 8.30am to 5.00pm Monday to Friday – please give us 24 hours notice

01638 742543 (answerphone) and we will return your call



ST MARY'S CHURCH, BURWELL

# Church Fete

In 'Merrie England' style

Come in Ye Olde English costume - prizes for best dressed!

Arts & Crafts Exhibition   Cream Teas   Barbecue

Games   Plants   Raffle

PLUS Bric-a-Brac, Stalls - and lots, lots more...

**Saturday, 8th June 2019**  
2pm - 4pm

Find us on **facebook.**

All proceeds to St Mary's Church, local and national charities  
Find us on Facebook: St Mary's Burwell & St Etheldreda's Reach

Are you looking after someone?

**Carers Week**  
10-16 June 2019

**Service of Thanksgiving  
for Carers  
followed by tea  
Sunday 16<sup>th</sup> June 2019  
3pm  
St Mary's Church Burwell  
All very welcome**

St Mary's Burwell  
St Etheldreda's Reach

Loving God, Loving People

**St Etheldreda's Church in Reach**

**Sunday 23<sup>rd</sup> June at 10.00am**

**A service for  
St Etheldreda's Day  
followed by refreshments in  
the Village Hall and an  
update on plans for  
development of the church  
and grounds**

CELEBRATING OUR 25<sup>th</sup> SEASON

John Rutter's  
**Feel the Spirit**

Conductor ~ Matthew Rudd  
Piano ~ Charlie Penn  
Jazz Quartet  
Soham Village College Junior Choir

Eric Whitacre - Her sacred spirit soars  
George Shearing - Songs & Sonnets of Shakespeare  
Thomas Morley - Hard by a crystal fountain  
Thomas Weelkes - As Vesta was from Latmos Hill descending  
Stephen Paulus - Afternoon on a Hill

**Saturday 29<sup>th</sup> June, 7.30pm**  
**St Mary's Church, Burwell**

£10 in advance / £12 on door (U16s free)

Burwell Post Office, CentrePeace & Tina's  
[www.ticketsource.co.uk/elyconsort](http://www.ticketsource.co.uk/elyconsort)  
(not booking fee applies)

2019 /elyconsort @elyconsort elyconsort.org.uk info@elyconsort.org.uk 2019

---

## Know Your District Councillors

---



The turnout in Bottisham ward in May's local elections was the highest in the whole district of East Cambs – 43%, so thank you for your interest and participation in the election process and thank you for electing us. We both intend to work hard for all the residents of Reach and the wider Bottisham ward.

We look forward to representing you on the Council and to championing those individuals or groups who need help. We will seek support from other Councillors to deliver our campaign commitments to improve our villages and district.

There are seven parishes in the ward and we will hold meetings in each village. Besides these meetings being an opportunity for you to discuss individual or group needs, it will also be a social event to become better acquainted with you. The number of villages in the ward means that we will hold meetings in each parish about twice a year and we will publish where we shall be each month. Our first such meeting will be in the Scout Hut, Bottisham on Tuesday 25 June from 6:30 - 7:45 and then at The Bell from 8:00 for a more informal session to meet your District Councillors.

We will also be writing a report for each issue of Within Reach and coming to meetings of the Reach Parish Council. Generally, it will just be one of us attending the meetings, so that we can cover all 7 parishes properly.

Our contact details are below, please contact one or both of us if you have anything to raise. You can also stop either of us in the street, in the shops or wherever you see us; if we are busy, we will arrange a time and place to meet you.

Charlotte Cane  
34 Swaffham Road, Reach CB25 0HZ  
[Charlotte.cane@eastcambs.gov.uk](mailto:Charlotte.cane@eastcambs.gov.uk)  
07976 607512

John Trapp  
104 Commercial End, Swaffham Bulbeck CB25 0NE  
[John.trapp@eastcambs.gov.uk](mailto:John.trapp@eastcambs.gov.uk)  
01223 812120

---

## Know Your Parish Council

---

Your councillors are:

Alex de Giorgio-Miller	Chair	07771 348013
Charlotte Cane	Vice Chair	741064
David McMillan	Councillor	741259
Andrew Trump	Councillor	07980 955490
Diana Ward	Councillor	744210
Vacancy	Councillor	
Vacancy	Councillor	

Charlotte Cane	District Councillor
John Trapp	District Councillor
Joshua Schumann	County Councillor

Your Clerk is Susan Bailey  
29 Great Lane Reach CB25 0JF; 01638 743794  
[clerk@reachparishcouncil.org](mailto:clerk@reachparishcouncil.org)

Meetings take place in the Village Centre on the first Wednesday of each month. They start at 7.30pm and all Reach villagers are welcome to attend.

---

## Reach Grant Fund

---

The Grant Fund replaces the Amenity Fund and exists to fund community activities in Reach.

Application forms should be downloaded from:  
[www.reach-village.co.uk/grant\\_fund.html](http://www.reach-village.co.uk/grant_fund.html)  
completed and then sent to Susan Bailey – contact details are above.



---

## Parish Council Meeting Minutes

---

### Minutes of Reach Parish Council meeting held on: Wednesday 3rd April 2019

#### Attendance

Charlotte Cane	Chair	Present
Hilary Fielding	Vice Chair	Present
Alex de Giorgio-Miller	Councillor	Present
Diana Ward	Councillor	Present
Andrew Trump	Councillor	Present
David McMillan	Councillor	Present
Nathan Bridgeman	Councillor	Not Present
Susan Bailey	Clerk	Present
Allen Alderson	District Councillor	Present
Joshua Schumann	County Councillor	Not Present

#### 1. Declaration of Interests

Councillor McMillan declared an interest in the Great Lane/Fair Green discussion.

#### Forum for members of the public.

There were none.

#### 2. Planning Applications

There were no new applications.

#### 3. County Councillor Report

None Received.

#### 4. District Councillor Report

Because of the forthcoming local elections we are now in Purda from March 26th to May 4th. This means Councillors cannot be quoted in any press release issued by the Council or use the resources of the Council for party political purposes unless to fulfil duty as a Councillor in office.

For this reason, I will be concentrating on meetings that I have attended recently. These included a Planning Committee, a Community Services Committee, a Swaffham Internal Drainage Board meeting, and a Full Council meeting where we discuss the Local Plan.

I also attached the following: -

A Seminar on Drainage, where we were given presentations by Cambs County Council, the Environment Agency, Swaffham Internal Drainage Board and Anglia Water.

A seminar on Archaeology where we were given a presentation by Quinton Carroll from the Historic Environment Team at Cambs County Council. He showed slides of a Bronze Age boat made from a tree trunk from about 1500BC, also a gold tork. They store all their finds in an underground Cold War Bunker in Cheshire. They work with developers to record any findings and make information available. They have records of approx. 15,000 archaeology sites in Cambridgeshire.

A visit to the National Stud at Newmarket which is owned by the Jockey Club. It currently accommodates about 200 brooding mares. On our tour of the stud I saw several recently born foals. The stud works alongside some of the industry's best vets and farriers to make sure that the horses have the best standard of care. They have several famous stallions at the stud.

Lastly, this May I will be standing down as your District Councillor after 15 years of service. I have many happy memories during this period and count it as a privilege to have worked on behalf of the residents of the Swaffhams ward, many thanks to you all.

The PC thanked Allen for his service to the village, and offered best wishes for the future.

#### 5. Minutes of previous Meeting

Approved as correct.

#### 6.1 Neighbourhood Plan

The Reach Neighbourhood Plan Project Group is meeting fortnightly.

We have a regularly updated presence on the village website and are contributing articles to Within Reach.

Communications about meetings are being pushed out via the village Facebook app and established email distribution lists.

Group membership is down one, following Nathan Bridgeman's resignation. A decision on the Group's future size and shape is dependent on a skills audit that is being undertaken by Charlotte. There is a small but dedicated pool of villagers taking an active interest in the work of the Group. Our aim is to draw in far more of the village as we go forward. Members of the Group have been appointed as leads for areas of work (work streams) that we will think form core elements of our Plan, for example housing, green spaces and historic assets. The structure of the Plan will, of course, evolve as we receive the views of the village.

The Group is actively engaged with Neighbourhood Plan teams in Peakirk, Witchford and Swaffham Prior and is drawing on their collective experience and lessons learned. We are also in continuing dialogue with CPRE and the strategic planning unit at ECDC who are proving to be very helpful. We also have established contacts with Cambridgeshire ACRE and East Cambridgeshire Community Housing. The National Trust has been briefed on the Neighbourhood Plan. Engagement with utility companies to determine current limits to growth in Reach, as briefed to March's PC meeting, continues to frustrate. We are engaging with the Swaffham Prior Community Energy Scheme to see if makes sense to incorporate an aspiration to do something similar in our Plan.

This month the Group has focused on two issues:

- A launch event, provisionally scheduled for Sunday 16 June the village hall. This is the start of engaging the village and we are exploring a variety of ways to draw in as much of the village as possible. In an associated event Charles Moseley has agreed to lead a walkabout to explain how the village has evolved and taken on its current shape. We will have a presence at Reach Fair to begin the conversation with residents.
- The implications of ECDC's decision to withdraw Local Plan 2018 from the central government inspection process and to revert to Local Plan 2015. This development is nationally unprecedented, and we are in uncharted territory. Communities across East Cambridgeshire will be at greater risk of housing development that they (and the District Council) don't want. On the basis of what we know at present, our Group has concluded that the case for a Neighbourhood Plan has strengthened. However, the cost and complexity of producing a Plan has increased significantly and, no matter how good our Plan, the village will remain dependent on ECDC's ability to meet ever more challenging central Government targets.

In the coming month, amongst many other things, we will:

- Apply to central Government for funding for the Project. The application process has been closed until the start of FY 2019/20 and we have needed to reassess our funding requirements in light of withdrawal of LP2018.
- Review our timetable in light of the emerging work streams and greater clarity about the implications of withdrawal of LP2018.

Nick Acklam was asked about the timings of the project, which is expected to take about two years now, however this is under constant review. The group feel that spending longer now getting things right will produce a better outcome.

## 6.2 Reach Grant Fund

Neighbourhood project plan group would like up to **£500** to hold a launch event & first village consultation.

Approved.

An official opening of the new picnic area is required as part of the fund-raising conditions, up to **£60** is requested for a trophy and refreshments.

Approved.

The Reach Riders Group have organised a live music event to raise money and promote their activities. They have requested up to **£150** for catering at the event.

Approved, **Clerk** to contact the group to clarify the application process for the Grant Fund.

## 6.3 Finance

Nothing to report.

A discussion took place regarding the legal fees which are still to be paid. The PC agreed that a figure of £XXXX would be a fair payment for the service received. **Clerk** to arrange payment prior to the financial year end.

## 6.4 Parish Council Members

A resident backing on to the playing field, had asked that the PC have the hedge cut at the back of the property. Several Councillors visited the site and concluded that this was not really a hedge but several little trees possibly self-seeded and that there is no evidence that the hedge is the responsibility of the PC. **Clerk** to inform the resident.

A member of the cricket club had spoken to a Councillor regarding a potential build of a pavilion on the 24Acres site. The cricket club are in the process of speaking with the National Trust in the first instance.

## 6.5 Play Spaces

### New playground:

Annual inspection carried out – no issues with any of the new equipment.

At the back of the playground sign there are 'projecting bolt threads present which need to be removed and deburred, or capped'. Tom at Prospects Trust very kindly offered to do this for us whilst they're working over there.

### Old playground area development:

Concrete has been poured for the table tennis table and picnic tables. Delivery of these is due this week, and then the raised bed can be built.

The Tesco grant was £1000

### Opening event

Sunday 2nd June, midday till 2pm.

Press, Sponsors, Prospects Trust and villagers will be invited via magazine, email, website, poster in bus shelters and notice board.

Group picnic and table tennis tournament.

Grant fund application for cakes, drinks and trophy submitted, along with risk assessment has been put forward.

#### Other

Swings on the green had their annual inspection and need work as detailed below:

- The paintwork has been damaged or worn exposing the metal underneath which is rusting – treat any rusting components and repaint.
- Excess chain on one swing – cut chain back.
- Safety surface showing signs of wear – monitor.
- Algae or moss growth on the surface resulting in slippery conditions – clean and treat with weed killer.
- One seat has minor damage or wear – monitor and replace as required.

As these are listed as low risk they will be carried out once more grant money has been received.

#### Bins

Have emailed ECDC about replacing the bin by the swings and the one by the cemetery with newer versions. Also asked his thoughts on moving the bin by the war memorial to the other side of the green. No response yet. Will chase again...

#### Phone box

BT have apologised and hope that the work to fix the back panel and reinstall the phone will happen 'over the next few weeks' (in email dated 19th March). Will chase again in 2 weeks if still no progress...

#### Grant application

Calor Rural Community Fund (£5000, £2500 or £1000). Application deadline end of April. Public voting and then judging of finalists. Would find out result 18th July.

Could include: 3 benches (2 in playground, one by swings), Swings repair work, bus shelter improvements possibly to include a book swap, & solar lighting, phone box repaint, clear up the Hythe & willow tree trim, replace and reposition war memorial bench on the green & refurbish war memorial surrounds.

### **6.6 Rights of Way**

Nothing to report.

### **6.7 24Acres Committee**

Nothing to report.

### **6.8 Friends of Reach wood**

The Woodland Trust have again agreed to pay for the ragwort control and 2 cuttings of the meadow area.

### **7. Tree/hedge cutting and insurance claim**

The PC has received correspondence from a resident's insurance company regarding trees damaging the property. Several Councillors visited the area and concluded that the trees in question are either part of an old hedge line and a fence has been put inside of them or that they are self-seeded as they are too close together. The insurance company has not provided any proof that these trees belong to the PC or that the PC has any responsibility for them. **Clerk** to write back to the insurance company.

### **8. RASP aerial at Vine House**

Following a complaint from a resident ECDC has requested that planning permission is required for the RASP aerial at Vine House. Air Broadband Ltd. have asked the PC to write to ECDC to support their request to not have to do this. Air Broadband Ltd. have supplied fibre to most of the village now and therefore the aerial will be able to be removed in the next 3 months as it will become redundant. They argue that the paperwork and cost of the planning application is unnecessary. Although there was concern that the aerial may still be required for the properties on Great Lane, the PC agreed that the **Clerk** should write to ECDC to give support.

### **9. Great Lane/Fair Green bend issues – possible LHI bid.**

The next LHI bids are now closed. The PC will look at the next round of bids once this becomes available. **Councillor McMillan** to write to Lords Ground to ask that they instruct their contractors not to come through the village, as most of the large vehicles trying to negotiate this bend at going to or from Lords Ground. **Councillor McMillan** will also keep a log of vehicle problems with the corner. The PC will advertise the log keeping on Facebook and email to ensure as many incidences as possible are recorded.

### **10. Reach Lode & Hythe area**

Discussions with the EA and GOBA continue regarding this project. Finance seems to be an issue therefore the PC will suggest that the back area of the Hythe is left which would hopefully allow the figures to balance. The PC is not happy to lose its mooring income which had been suggested by GOBA. It had also been suggested that the PC should help with the project management of the project. As a lot of this work is the statutory obligation of the EA and the Councillors do not hold the required insurances the PC is unable to commit to this. **Clerk** to inform the EV and GOBA.

### 11. Speed monitoring

The PC are keen to data on the number and speed of vehicles entering the village from all 3 entrances roads. **Clerk** to again contact Swaffham Prior PC to arrange for their equipment to be used for one week at each location. Once arranged this will be advertised on the website, Facebook and by email.

### 12. May PC meeting date

The next PC meeting will be held following the local elections on Wednesday 15<sup>th</sup> May.

### 13. Information Items

There were none.

Following the resignations of Councillors Fielding and Bridgeman, Councillor Cane thanked them for their service to the village and wished them all the best for the future. Councillor Fielding has offered to continue as Rights of Way Officer should the new Council wish.

### 14. Payments

E. on – Power on the green £7.94  
S Bailey – Clerk salary £964.86  
CR Contracting – mowing contract £144.50  
Came & Co – Insurance £952.28

## **DRAFT Minutes of Reach Parish Council meeting held on; Wednesday 15th May 2019**

### Attendance

Charlotte Cane	Chair	Present
Alex de Giorgio-Miller	Councillor	Present
Diana Ward	Councillor	Present
Andrew Trump	Councillor	Not Present
David McMillan	Councillor	Present
Susan Bailey	Clerk	Present
Charlotte Cane	District Councillor	Present
Joshua Schumann	County Councillor	Not Present

### 1. Apologies for absence

Received and approved.

### 2. Election of Officers; Chairman, and Vice Chairman.

Chair - Councillor de Giorgio-Miller proposed by Councillor cane, seconded by Councillor Ward. Unanimously agreed.  
Councillor Cane was elected vice Chair, proposed by Councillor de Giorgio-Miller and seconded by Councillor Ward. Unanimously agreed.

### 3. Declaration of Interests

There were none.

### 4. Minutes of previous Meeting

Approved as correct.

### 5. Election of additional officers

Play spaces Officer - Councillor de Giorgio-Miller agreed to continue in this position.  
Hilary Fielding had offered to continue as Rights of Way Officer. Unanimously agreed.

In addition, the following were appointed onto the neighbourhood Plan committee – Nick Acklam, Jo Riches, Penny Greenhill, Charlotte Cane, Sarah Phipps-Rhodes, Catherine Gibson, Diana Ward & John Dunnett.  
It was confirmed that the NP is a committee of the PC.

### 6.1 Neighbourhood Plan

No report supplied.

### 6.2 Reach Grant Fund

A request of £200 was received for the yearly sports day event. Approved.

### 6.3 Finance

The end of year accounts are now with the Auditor and will be available to view as soon as they are returned.

#### 6.4 Parish Council Members

Councillor Ward reported that the Lode project was still active if progressing slower than hoped.

#### 6.5 Play Spaces

##### New playground:

Prospects Trust have kindly fixed the playground sign as per the inspection report.

##### Old playground area development:

Work completed just in time for the fair – and it looks great! Prospects Trust are going to let me know their plan for the grass and then the work is complete.

Opening event - Sunday 2nd June, midday till 2pm.

##### Other

##### Bins

Chased ECDC re. replacing the bin by the swings and the one by the cemetery with newer versions. Also asked his thoughts on moving the bin by the war memorial to the other side of the green. They are waiting to hear from their contractor on time scales...

##### Phone box

I've chased BT again and they have apologised again and hope that the work to fix the back panel and reinstall the phone will happen in the next month.

##### Grant application

Application submitted to Calor Rural Community Fund for £5000 to cover 3 benches (2 in playground, one by swings), swings repair work, bus shelter improvements including book swap and solar lighting, phone box repaint, war memorial repairs and repositioning of bench by war memorial.

The next stage is public voting. As a small village we will need all the help we can get to publicise and get as many votes as we can. People can vote by going to [www.calor.co.uk/communityfund](http://www.calor.co.uk/communityfund) and searching for Reach. Posters are already up around the village and emails and Facebook posts will be sent. A flyer drop to houses in the village will also take place in the next couple of weeks. Voting closes 17th June and if we have enough votes then it goes to a judging panel. Final results are 18th July.

#### 6.6 Rights of Way

Nothing to report.

#### 6.7 24Acres Committee

Nothing to report.

#### 6.8 Friends of Reach wood

Nothing to report.

#### 7. Information Items/AOB

There were none.

#### 8. Payments

E. on – power on the green	£17.55
E. on – Street lights electricity	£639.86
Jo Riches – Neighbourhood plan from Grant Fund application	£158.84
CR Contracting – mowing contract	£365.00
Fenland Leisure – Playground inspection	£100.00
S Bailey Y/E 2019 holiday pay	£643.24
CAPALC – Affiliation fees & data protection membership scheme.	£219.00
Parish Online – annual membership	£36.00
Prospects Trust - Labour charge for Reach Community Garden Project	£4000.00
Reach Riders – Fundraising event. Grant fund	£150

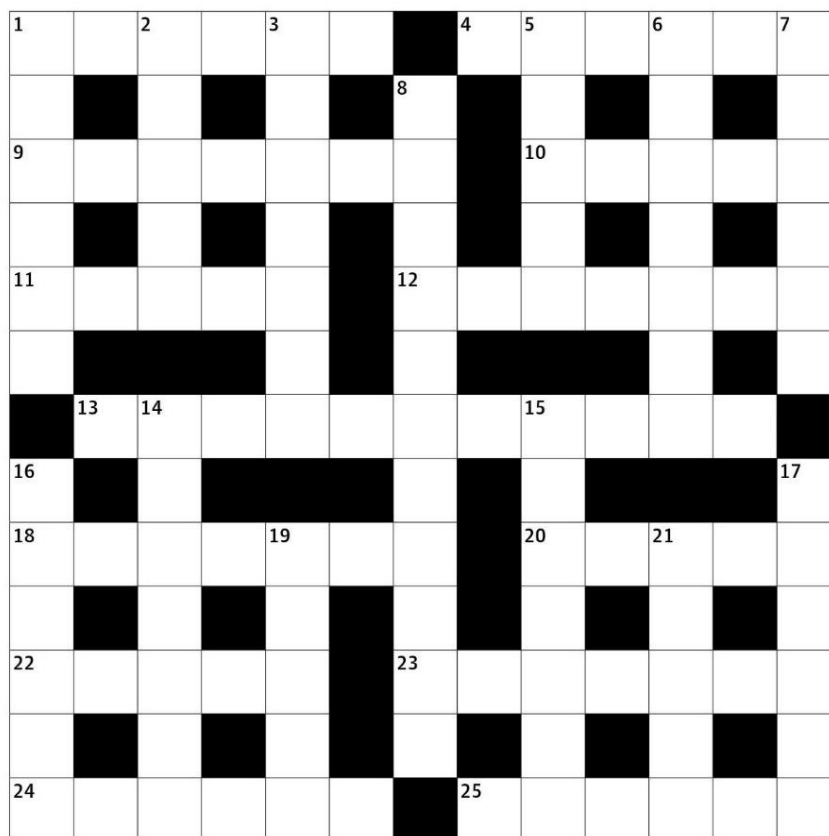
#### 9. Forum for members of the public – Approx. 7.15pm

There were none.

#### 10. Planning Applications – 18/01706/FUL – Timber framed garage extension

The PC had received a copy of a letter from a resident with concerns regarding this application. Further research had revealed that a car business Elite Vehicles operates at this address. It is understood that this business involves some repair work to cars. If this additional space is required for commercial purpose, concerns include the ventilation required for such a business, which is not detailed, the potential increase in traffic, and disturbance from noise & smells/fumes. If this is merely a domestic garage the concerns are the proximity to the boundary, over shadowing, and potential loss of privacy. The PC objects to this application unless further information is forthcoming. The PC would also like this application called in to the Planning Committee. **Clerk** to write to the planning officer.

## Crossword



### Across

- 1 Remove weapons from (6)
- 4 Large – universal (6)
- 9 Sturdy ‘British’ dog (7)
- 10 Fed up (5)
- 11 Staunch (5)
- 12 Undergoing court process (2,5)
- 13 Dinner jacket worn with a white shirt (informal) (7,4)
- 18 Kenyan capital (7)
- 20 Irk (5)
- 22 Perch (5)
- 23 Anger at having been offended (7)
- 24 Work by Keats or Shelley, say (6)
- 25 Breathe out (6)

### Down

- 1 Try something briefly and superficially (6)
- 2 Preposterous (5)
- 3 Sign of danger (or socialism)? (3,4)
- 5 Path around (5)
- 6 Gin and vermouth (7)
- 7 Hold close, affectionately (6)
- 8 Humiliating (11)
- 14 Embodiment (7)

- 15 Crate used by orators at Speakers’ Corner? (7)
- 16 Deceive – lead on (6)
- 17 Painted or sculpted band running round under the ceiling (6)
- 19 External (5)
- 21 Tropical fruit with yellow skin and pink pulp (5)



## Church Services at Burwell and Reach

June 2019	St Mary's Burwell	St Etheldreda's Reach
<b>Sunday 2<sup>nd</sup> Sunday after Ascension</b>	8.00 am Holy Communion 10.00am All Age service	
Wednesday 5 <sup>th</sup>	10.00am Holy Communion 11.00am Holy Communion at Ash Grove 8.00pm Twilight Meditations	
Thursday 6 <sup>th</sup>		8.15 am Morning Prayer
<b>Sunday 9<sup>th</sup> Pentecost</b>	10.00am Holy Communion with Junior Church 7.00pm Sunday @ 7	8.00am Holy Communion
Wednesday 12 <sup>th</sup>	10.00am Holy Communion	
Thursday 13 <sup>th</sup>		8.15am Morning Prayer
<b>Sunday 16<sup>th</sup> Trinity</b>	8.00 am Holy Communion 10.00am Holy Communion 3.00pm Carers' Service	
Wednesday 19 <sup>th</sup>	10.30am Holy Communion at Ness Court	7.00pm Candlelit Night Prayer (Compline)
Thursday 20 <sup>th</sup>		8.15am Morning Prayer
<b>Sunday 23<sup>rd</sup> Trinity 1 St Etheldreda's Day</b>	8.00am Holy Communion 4.00pm Messy Church	10.00am St Etheldreda's Day service
Wednesday 26 <sup>th</sup>	10.00am Holy Communion	
Thursday 27 <sup>th</sup>		8.15am Morning Prayer
<b>Sunday 30<sup>th</sup> Trinity 2</b>	No 8.00 am service 10.00am Holy Communion	
July 2019	St Mary's Burwell	St Etheldreda's Reach
Wednesday 3 <sup>rd</sup>	10.00am Holy Communion 11.00am Holy Communion at Ash Grove	
Thursday 4 <sup>th</sup>		8.15am Morning Prayer
<b>Sunday 7<sup>th</sup> Trinity 3</b>	8.00am Holy Communion 10.00am All Age Service with Baptisms	
Wednesday 10 <sup>th</sup>	10.00am Holy Communion	
Thursday 11 <sup>th</sup>		8.15am Morning Prayer
<b>Sunday 14<sup>th</sup> Trinity 4</b>	10.00am Holy Communion 7.00pm Sunday @ 7	8.00am Holy Communion
Wednesday 17 <sup>th</sup>	10.30am Holy Communion at Ness Court	
Thursday 18 <sup>th</sup>		8.15am Morning Prayer
<b>Sunday 21<sup>st</sup> Trinity 5</b>	8.00am Holy Communion 10.00 am Holy Communion 4.00pm Messy Church	
Wednesday 24 <sup>th</sup>	10.00am Holy Communion	
Thursday 25 <sup>th</sup>		8.15am Morning Prayer
<b>Sunday 28<sup>th</sup> Trinity 8</b>	8.00am Holy Communion 10.00am Holy Communion	
Wednesday 31 <sup>st</sup>	10.00am Holy Communion	

## Bus Timetable

Reach is served by the Stagecoach number 11 bus service - summary of all buses serving Reach is shown below.

**Please note that there is no bus service at all on Sundays**

Cambridge to Bury - Monday to Friday (excluding Bank Holidays)				
Cambridge Drummer Street	Reach	Burwell Ness Road	Newmarket Bus Station	Bury Bus Station
06:50	07:35	07:45	08:17*	08:49
07:50	08:35	08:45	09:17*	09:49
09:50	10:35	10:45	11:17*	11:49
11:50	12:35	12:45	13:17*	13:49
13:50	14:35	14:45	15:17*	15:49
15:50	16:42	16:45	17:24	17:55
18:15	19:00	19:10		
19:15	20:00	20:10		

Cambridge to Bury - Saturdays (excluding Bank Holidays)				
Cambridge Drummer Street	Reach	Burwell Ness Road	Newmarket Bus Station	Bury Bus Station
06:50	07:35	07:45	08:17*	
07:50	08:35	08:45	09:17*	09:49
09:50	10:35	10:45	11:17*	11:49
11:50	12:35	12:45	13:17*	13:49
13:50	14:35	14:45	15:17*	15:49
15:50	16:35	16:52	17:17	17:55
18:15	19:00	19:10		
19:15	20:00	20:10		

Bury to Cambridge - Monday to Friday (excluding Bank Holidays)				
Bury Bus Station	Newmarket Bus Station	Burwell Ness Road	Reach	Cambridge Drummer Street
		06:14	06:29	07:22
		06:39	06:54	07:50
	08:40	09:08	09:23	10:13
10:05	10:35*	11:08	11:23	12:13
12:05	12:35*	13:08	13:23	14:13
14:05	14:35*	15:08	15:23	16:13
15:05	15:35*	16:08	16:23	17:13
16:05	16:35*	17:08	17:23	18:13
17:05	17:35*	18:08	18:23	19:13

Bury to Cambridge - Saturdays (excluding Bank Holidays)				
Bury Bus Station	Newmarket Bus Station	Burwell Ness Road	Reach	Cambridge Drummer Street
		06:19	06:34	07:22
		06:49	07:04	08:00
	08:40	09:08	09:23	10:13
10:05	10:40*	11:08	11:23	12:13
12:05	12:40*	13:08	13:23	14:13
14:05	14:40*	15:08	15:23	16:13
15:05	15:40*	16:08	16:23	17:13
16:05	16:40*	17:08	17:23	18:13
17:05	17:40*	18:08	18:23	19:13

\* These are departure times, buses will arrive approximately 5 minutes earlier

A full timetable can be downloaded from [www.reach-village.co.uk/bus\\_service.html](http://www.reach-village.co.uk/bus_service.html)

---

## Diary Dates

---

June	Event	Location	Time
Wednesday 5	Parish Council Meeting	Village Centre	7.30pm
Thursday 6	Recycling Day (Blue)		
Wednesday 12	Village Centre Committee Meeting	Village Centre	8.00pm
Thursday 13	Recycling Day (Green)		
Friday 14	Mobile Library – Route C12	Village Green	2.20pm
Thursday 20	Recycling Day (Blue)		
Thursday 27	Recycling Day (Green)		

July	Event	Location	Time
Wednesday 3	Parish Council Meeting	Village Centre	7.30pm
Thursday 4	Recycling Day (Blue)		
Wednesday 10	Village Centre Committee Meeting	Village Centre	8.00pm
Thursday 11	Recycling Day (Green)		
Friday 12	Mobile Library – Route C12	Village Green	2.20pm
Thursday 18	Recycling Day (Blue)		
Thursday 25	Recycling Day (Green)		

---

## Then and Now *(see opposite page for pictures)*

---

### Reach Village Shop and Post Office c1960

The East side of Fair Green taken about 1959 with scaffolding still around the church after the lightning strike.

'The Ship' inn can just be seen to the left of the church.

The aptly named 'Vine Cottage' with the white fence was then occupied by Mr Walter Wells.

### Chris Patterson

---

## Contact Information

---

<b>Parish Council – see “Know Your Parish Council”</b>			
<b>Village Centre</b>			
	Chair	Andrew Towers	01638 742484
	Finance	Andrew Trump	01638 743335
	Bookings	Grahame Radford	01638 742814
	<b>Marquee Bookings</b>	Andrew Hall	01638 743737
<b>Church</b>			
	Vicar	Eleanor Williams	01638 741262
	Curate (duty days Wed, Fri and Sun)	Reverend Paula Spalding	07545 868549
	Priest in Retirement	Reverend David King	01638 742924
	Parochial Church Council Member	Pam King	01638 742924
	Churchwarden	Dr Stephen Martin	01638 611235
	Churchwarden at Burwell/Reach	Sarah Wingate	01638 742498
<b>Emergencies</b>			
	Electricity (Eastern Electric)		0800 783 8838
	Police (Emergency)/(Non-Emergency)		999/101
	Water (Anglian Water)		08457 145145
<b>Doctors, Burwell</b>			
	Appointments and Emergencies		01638 741234
	Enquiries		01638 743602
	Community Nurses		01638 742382
	Surgery Hours	Mon 8.30am to 6.00pm with extended hours on a Monday please phone the surgery for details	